

Spring 2008

- 2 Donate Life Run/Walk April 26
- 3 Tissue Operations
- 4 Organ Donor Data
- 5 El Puente
- 6 2008 Donate Life Rose Parade Float
- 7 Research
- 8-9 Community Events
- 10 Volunteer Program Celebrates 5 Years
- 12 Donor Remembrance Ceremonies
- 14 Hospital Donor & Referral Data



[www.donateLIFeCalifornia.org](http://www.donateLIFeCalifornia.org)  
[www.doneVIDAcalifornia.org](http://www.doneVIDAcalifornia.org)

# The Bridge

*The community newsletter of OneLegacy, the non-profit organ and tissue recovery organization serving the greater Los Angeles area*

## Organ Consent Rate and Tissue Recovery Peak in 2007

OneLegacy achieved its highest-ever organ donation consent rate, 63%, in 2007. The rate marks an improvement of one percentage point over the mark set the year before, and a full seven percentage points above the average between 2002 and 2005.

Working in concert with more than 200 hospital partners, OneLegacy coordinated the recovery of 1,233 transplanted organs from 395 donors last year. Although the number of organ donors and organs recovered declined from the prior year, the 2007 totals represent the organization's second-highest ever.

Several large organ recovery agencies reported a decline in the number of eligible donor referrals in 2007, and OneLegacy was no exception, said OneLegacy CEO Tom Mone. Of course, this means that fewer people died under the sudden circumstances that usually precede the opportunity to donate organs, so our community benefits in this regard. We are proud to serve Southern California's multicultural communities by making the best of the opportunities that are presented to us.

Continuing its tremendous growth in 2007 was OneLegacy's Tissue Operations. OneLegacy recovered tissue from 1,419 donors, up from 889 tissue donors in 2006 and 397 in 2005. Most tissue recovered by OneLegacy eventually returns to our area for use in medical procedures, said Mone. Since a single tissue donor can give corneas, bone and skin that can save and heal up



## Erin Choe

BY VICTOR AND JENNIFER CHOE

Even though Erin was only five years old and the youngest of three children, she behaved maturely beyond her years. She loved the challenges in her life and always looked beyond to expand her limits. She was eager to read at two. At four, she endlessly began to draw and put her thoughts into writing. She would often draw a cross with a heart in the middle. She was never shy, but was always eager to sing praise songs and even rap at times. These treasures and memories she left behind reflect her love for God who is the center of our family.

Then she went home to be with the Lord on September 2, 2006. She spent the whole Labor Day weekend with family and friends doing what she loved best. She even had a chance to play in a soccer game she so wanted to be in. Now she is forever in the arms of Jesus. The

# Up to 6,000 Participants Expected at 6th Annual Donate Life Run/Walk

Thousands of Southern Californians touched by donation will gather at the 6th Annual Donate Life Run/Walk on Saturday, April 26 at Cal State Fullerton. Proceeds will fund media campaigns promoting enrollment in the Donate Life California Organ & Tissue Donor Registry.

Last year, attendance increased by 20% to more than 5,000 participants, with 1,500 donor family members forming teams in honor of 73 organ and tissue donors.

For a fourth year, a challenge has been issued to all Orange County mayors to participate in a Mayor-athon at the event. As of April, 13 mayors and 12 superintendants had committed to

Donor families, transplant recipients, healthcare professionals, civic leaders and official sponsors are among the 5,000 participants of the 2007 Donate Life Run/Walk.

walk with constituent donor family members and transplant recipients.

The Circle of Life Garden, which allows donor families and recipients to honor organ and tissue donors with a sign posted in a special designated area, will return after a successful debut last year. Approximately 100 signs will adorn the meditative area, allowing all participants the opportunity to pay tribute to organ and tissue donors.

For registration and other event information, visit the Donate Life Run/Walk website, [www.donatelifecoc.org](http://www.donatelifecoc.org). @



## Date

Saturday, April 26

## Time

- 7:00am Registration
- 8:15am Pre-Race Ceremony
- 9:15am 5K/1K Run/Walk
- 10:00am Family Health Festival

## Location

Memorial Grove, Cal State Fullerton

## Presenting Sponsors

- Cal State Fullerton
- Cedars-Sinai Medical Center
- OneLegacy
- St. Joseph Hospital Kidney Transplant Program
- Vons
- Washington Mutual

## Highlights

- Circle of Life Garden
- BMX Show
- Events for Children

## Registration & Information

[www.donatelifecoc.org](http://www.donatelifecoc.org) or 714-526-0181

## Crossroads

**MILESTONES** Adam Teller and his wife Rachel welcomed daughter Lilah Anne on February 20... Stacy Anderson delivered son Emanuel on April 2.

**WELCOME Administration:** Christina Courtney, Donate Life Intern...Raffaello Goeting, Hospital Services Coordinator...Amanda Mahoney, Family Services Intern...Margaret Wylie, Executive Assistant to President and Chairman of the Board. **Organ Recovery:** : Monika Donisthorpe, Pauline Gaughan, Diego Rose and Mae Wong, Procurement Transplant

Coordinators. **Tissue Operations:** Erika Arellano, Donor Information Coordinator...Jamel Blount, Ron Campos, Kimberly Davis, Maria Donato, Jennifer Elaparin, Berta Flowers, Timothy O'Halloran, Ezra Pineda and Reginald Robertson, Recovery Technicians...Gonzalo Lazarte, Tissue Operations Project Specialist.

**ON THE MOVE** The following employees have recently transitioned to a new role and/or office location within OneLegacy. **Administration:** Lori Benson, Senior Quality Systems Audit Specialist...Kathleen Hostert, Communications Manager...Adena Evans, Quality Systems Compliance Specialist...Anita Jackson Jones, Recruitment Specialist, Human

Resources...Tom Seto, Quality Systems Process Engineer. **Tissue Operations:** Jesse Bravo, Supervisor of Recovery and Technical Operations ...Johnny Carwell, Manager of Donor Services and Business Development...Barry Gray, Recovery Technician II...Michelle Payad, Recovery Coordinator...Terilynn Whitaker, Supervisor of Donor Recovery Operations.

**BEST WISHES** We wish the following employees the best of luck in their future endeavors: Ireneo Alvarez, Erin Anderson, Cindy Blinci, Kimberly Davis, Thomas Ferguson, Nick Massoud, Alejandro Medrano, Esmeralda Mondragon, Odin Ortega, Skye Rivera, Lisa Rubalcava and Danielle Welzig.

# Tissue Operations Team Hits Stride, Meets Goals

BY ELENA DE LA CRUZ

Thousands of people in need of sight, mobility and other life-enhancing procedures were helped by OneLegacy's recovery of 1,419 tissue and eye donors in 2007.

The number of tissue donors recovered by OneLegacy has increased remarkably over the last three years - from 400 donors in 2005 and 881 donors in 2006 - as the organization acquired responsibility for recoveries previously shared with four other tissue banks that served the greater Los Angeles area: Inland Eye and Tissue Bank, American Red Cross Tissue Services, Orange County Eye and Tissue Bank, and Doheny Eye and Tissue Bank. The net effect has been to streamline and facilitate tissue donation throughout OneLegacy's seven-county service area.

Leading OneLegacy into its next phase of tissue recovery is Prasad Garimella, who was named Vice President of Tissue Operations in August 2007. Garimella, who has since taken on additional responsibilities as Chief Information Officer, spent his professional career with Tissue Banks International, working in Southern California (where he dramatically increased TBI's recoveries) and most recently in Ohio, where he managed TBI's recovery operations nationwide.

According to Garimella, 1,010 cornea transplants were performed in 2007 thanks to donors in OneLegacy's service area. There were also approximately 300 heart valve donors, 850 musculoskeletal donors, and 820 skin donors. Garimella's goal for 2008 is to recover at least 1,500 donors among the more than 20,000 potential tissue donors referred to OneLegacy in each year.

Like most organ and tissue recovery agencies across the country, OneLegacy is not involved in the preparation (or processing) of tissue for transplant. Recovered tissue is transferred to tissue processors such as Musculoskeletal Transplant Foundation and Tissue Banks International, which then prepare and engineer the tissue for medical applications.

The biggest barrier in tissue is time, explains Garimella. Within 24 hours we have to determine eligibility, contact the family, interview them about their loved one's medical and social history, and perform the recovery. Sometimes there is simply not enough time. ☺



OneLegacy Tissue Operations Management Team: Prasad Garimella, CIO/Vice President, Tissue Operations; Jesse Bravo, Supervisor of Recovery Operations, Los Angeles; Johnny Carwell, Manager, Donor Services & Business Development; Aaron Cohen, Manager, Donor Recovery & Technical Operations - Santa Ana, Redlands, and Bakersfield; and Blanca Macias, Manager, Donor Information. Not pictured: Chris Blanton, MD, Medical Director, Ocular Services and Teri Whitaker, Supervisor of Recovery Operations, Redlands.

## Tissue Recipient Expresses Thanks

The impact of tissue donation was expressed recently in a touching letter sent from a tissue recipient to a donor family through OneLegacy. We thank the author for permitting us to share it with you.

*I am writing to let you know that I am grateful for your loved ones decision to make tissue donation. I needed a bone graft due to a cyst that developed on my mandible which caused bone loss. I would have lost several teeth if not for having the bone that was donated. It may seem like a relatively small problem but without the donation it would have been much worse. My overall health would have been affected if I were toothless. It has really helped me and I do appreciate and admire your courage.*

## Hospitals with Highest Tissue Referral Rate

In 2007, these hospitals were recognized for following guidelines to refer potential tissue donors within one hour of death.

Mountains Community Hospital	95%
VA Loma Linda Healthcare Systems	95%
Bakersfield Memorial Hospital	92%
San Joaquin Community Hospital	91%
Vista Specialty Hospital of San Gabriel	90%
Rancho Los Amigos Medical Center	88%
Promise Hospital of East Los Angeles	86%
Rancho Specialty Hospital	84%
Santa Ynez Valley Cottage Hospital	84%
Glendale Adventist Medical Center	83%
South Coast Medical Center	83%
Huntington Hospital	81%

\*Measurement period: 6/1/06 to 5/31/07

# Organ Donation Data

Following are key OneLegacy performance indicators for the year 2007. (Source: OneLegacy data)

	Jan	Feb	Mar	Apr	May	Jun	Jul	Aug	Sept	Oct	Nov	Dec	TOTAL
Organ Donors	32	45	33	42	30	26	20	38	34	30	35	31	396
Kidneys Recovered	60	87	63	75	58	48	32	70	63	55	70	60	741
Kidneys Transplanted	50	68	55	64	47	41	24	58	48	47	57	46	605
Extra-Renals Recovered	38	79	60	81	68	43	28	52	43	45	54	64	655
Extra-Renals Transplanted	37	76	60	80	63	38	29	50	39	45	48	63	628
Hearts Transplanted	6	15	11	12	15	9	9	7	6	10	10	15	125
Livers Transplanted	24	37	30	33	23	15	17	25	25	25	23	27	304
Lungs Transplanted	5	13	13	22	19	9	0	11	7	7	6	14	126
Pancreases Transplanted	2	11	6	11	6	5	3	6	1	2	9	6	68
Consent Rate	65.0%	77.3%	59.1%	64.9%	50.8%	58.5%	54.2%	73.3%	66.1%	55.0%	61.4%	65.4%	62.6%
Conversion Rate	68.9%	81.8%	66.7%	68.3%	56.6%	59.5%	61.8%	74.5%	73.9%	62.5%	74.5%	72.1%	68.4%
Organs Recovered	98	166	123	156	126	91	60	122	106	100	124	124	1396
Organs Transplanted	87	144	115	144	110	79	53	108	87	92	105	109	1233
Organs Recovered Per Donor	3.06	3.69	3.73	3.71	4.20	3.50	3.00	3.21	3.12	3.33	3.54	4.00	3.53
Organs Transplanted Per Donor	2.72	3.20	3.48	3.43	3.67	3.04	2.65	2.84	2.56	3.07	3.00	3.52	3.11

## Save The Date!

Hospital staff are invited to attend

### "Celebrating Our Partners"

**Donation and Transplantation Conference and Awards Ceremony**

**Wednesday, June 4, 2008**

**Downtown L.A. Marriott**

Donor Councils will be presenting in all-day breakout sessions on topics such as:

**Approaching Families • Donor Management • Donors in the OR**

For more information and to receive an invitation to the event, contact Carla Hentz at [chentz@onelegacy.org](mailto:chentz@onelegacy.org)

## U.S. ORGAN TRANSPLANT WAITING LIST STATISTICS

	California	USA
Kidney	15,497	75,034
Liver	3,668	16,390
Pancreas	146	1,620
Kidney/Pancreas	470	2,251
Heart	265	2,669
Lung	174	2,122
Heart/Lung	16	103
Intestine	29	224
<b>Total</b>	<b>19,816</b>	<b>98,027</b>

Source: UNOS. Based on OPTN data as of March 21, 2008

## Día de los Muertos: Celebrando la vida y el regalo de nuestros seres queridos

POR SANDRA MADERA

Este pasado 28 de octubre, OneLegacy invitó a los Embajadores de Done Vida a participar en nuestro primer altar de Día de los Muertos en honor a donantes de órganos y tejidos.

Para los mexicanos y muchos centroamericanos, esta celebración no es una ocasión triste, más bien es una oportunidad de celebrar la vida y la memoria de nuestros seres queridos que han pasado mejor vida. Con esta idea en mente, empleados y Embajadores de OneLegacy empezaron en la mañana a construir el altar en honor a donantes.

El festival es celebrado anualmente en el cementerio Hollywood Forever Cemetery. El público construye cientos de altares de diferentes tamaños y con temas muy variados, y miles de personas vienen a ver los altares que se han hecho con tanto empeño. El tema de nuestro altar fue 'Puente a la Vida,' porque con su donación de órganos y tejidos, los donantes les dan una nueva vida a los beneficiados.

Después de pasar por un arco que representaba el 'Puente a la Vida,' el público se acercaba a una pared que erguimos para exponer las fotos e historias de algunos de los donantes de nuestra red de servicio. Para nuestro altar, varios Embajadores, como Eva y Arnoldo Pérez trajeron fotos y recuerdos de sus seres queridos que fueron donantes.

El altar fue decorado con telas, velas



Eva y Arnoldo Pérez y su familia honran a Hernán Aizpuro en el altar de Día de los Muertos.

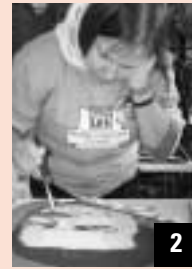
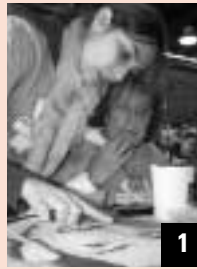
calaveras, fotos, recuerdos como juguetes y aretes, fruta, pan, flores de papel y flores vivas, incluyendo el cempaschil (marigold), que es la flor tradicional del Día de los Muertos. También decoramos usando calaveras hechas de papel mache y otras hechas de azúcar, que son tradicionales para un altar de Día de los Muertos.

Este año esperamos poner un altar todavía más grande al que hicimos el año pasado. Si a usted le gustaría participar en decorar el altar, o en el comité de planificación, las juntas empezarán al principio del verano. Por favor llame a Sandra Madera al (213) 229-5655 para más información. @



# Award-Winning "Flight" at 2008 Rose Parade

The Donate Life community's fifth Rose Parade float entry, "Life Takes Flight", was honored with its first award: the Judges' Special Trophy for Most Spectacular in Showmanship and Dramatic Impact. Thanks to the efforts of nearly 60 organizations and thousands of individuals nationwide, 375 media stories about the Donate Life float and its riders, walkers, florigraph honorees, Family Circle rose dedications, and decorators aired and published nationwide - a 67% increase versus the prior year. Included were 21 national and 112 regional TV stories and 95 articles in major daily newspapers. A total of 312 stories ran in general market media, 34 in Spanish language media, and 29 through Asian outlets. The float committee is currently developing the Donate Life float design for the 2009 Rose Parade, themed "Hats Off To Entertainment".



Family members decorate florigraphs honoring donors (1) Juan Juaregui and (2) Brian David Wos. The families of donors (3) Terry Lee Snow and (4) Cecil Evans, Sr. proudly display their completed florigraphs. (5) Lori Whitehead decorates the florigraph of her father Raymond Costlow from her hospice bed. (6) 40 decorators from DMV field offices statewide pose in front of the Rose Bowl. (7) The float's 32 riders and walkers line up in front of the float the morning of the parade. (8) Preceded by Donate Life's first-ever award banner, "Life Takes Flight" proudly makes it way down Colorado Blvd. (9) The nine walkers each held tether lines connecting them to their florigraphs, allowing them to walk five more miles with their loved ones. (10) Assemblyman Tom Berryhill of Modesto, a heart recipient, and DMV employee Jan Barney of Elk Grove, a cornea recipient, wave to the crowd. (11) More than 1,300 roses from all 50 states and 21 countries made the New Year's Day voyage through the Family Circle Rose Dedication Program. Photos 1-4 by Bryan Stewart. Photos 5 by Kathleen Hostert. Photo 6 by Luis Ramirez. Photos 7-11 by Scott Weersing.

To view more photos, visit [www.donatelifefloat.org](http://www.donatelifefloat.org).

# Research Helps Recipients, Donor Families Alike

BY SANDRA MADERA

As OneLegacy's Director of Research Partnerships, Maria Stadtler's passion for research has been the catalyst for job changes and treks around the globe. After moving to the U.S. from Germany, Stadtler worked as a dialysis nurse, a transplant coordinator, and a procurement transplant coordinator, and then launched OneLegacy's research arm. Two years later, Stadtler's vision for international collaboration and sharing of best practices is beginning to emerge, to the benefit of donation and transplantation worldwide.

OneLegacy's involvement in research is twofold. First, OneLegacy supports clinical research by partnering with research agencies such as IIAM, NDRI, Vesta Therapeutics, CellZDirect as well as local researchers to help cure diseases such as diabetes and cystic fibrosis and advance islet cell transplantation. In order to assist these partners, OneLegacy staff present the opportunity for families to donate their loved ones' organs for research if they cannot be transplanted. Individuals also consent to donation of organs for research through the Donate Life California Registry.

The reason people say yes to donation is that they want to help, said Stadtler. Sometimes when organs we thought could be transplanted are not, they can be of vital use in medical research. In 2007, families donated more than 600 non-transplantable organs for research, of which 112 were placed with OneLegacy's partner research agencies.

Second, OneLegacy performs clinical research in collaboration with transplant centers and institutions, combining our empirical research with scientific knowledge. Stadtler cites the area's large number and diversity of donors and transplant centers as advantages to collaborating with OneLegacy. As a result, OneLegacy and our partners published and presented at several national and international conferences in 2007.

The reason we have branched out in so many ways is to improve our process in practice, Stadtler explained. The outcome is eventually two-sided. If we as an OPO improve our donor management - what medications we give, what diagnostic treatments we perform - the transplanted organ will help recipients live longer and with less immunosuppressant medication. And by offering this benefit, we maximize the gift from the donor family.

Please see **RESEARCH**, Page 13

OneLegacy's Stephanie Collazo, Maria Stadtler, Karen Samartan, Adam Teller, Anna Komac-Pazur and Anna Otero contributed to a pilot study of the utilization of non-invasive ultrasound that was presented at the annual NATCO meeting in August 2007.

## Chagas Disease Study Completed

Director of Research Partnerships Maria Stadtler announced the successful completion of the Chagas Questionnaire Study, the first-ever assessment of the risk factors for Chagas disease among U.S. organ donors. Collaborating with Dr. Marek Nowicki and Claudia Chinchilla of the National Institute of Transplantation, OneLegacy family care coordinators and administrative assistants collected data for the study.

The study assessed the prevalence of donors with risk factors for Chagas vectors and compared it with data obtained using the serological screening test (EIA+RIPA). Preliminary data presented as an oral presentation at the 2007 ATC Congress in San Francisco shows that 156 donors (41.5%) within a 12-month period were of Latino descent. Three donors (0.8%) were reported to be diagnosed with Chagas disease in the past. Sixty donors (15.9%) were reported to have traveled to areas where *T. cruzi* is endemic and/or stayed for an extended time in housing potentially infested by the vectors of Chagas disease. One donor (0.27%) tested positive (EIA+RIPA) for antibodies to *T. cruzi*.

The research team concluded that a large proportion of donors in Southern California are at risk of being exposed to the vectors carrying *T. cruzi*, underscoring the need to monitor this new and emerging infection risk among organ donors using serological tests rather than self reported risk factors. The team is currently working on the manuscript.

**Utilization of Non-invasive Ultrasound Guided Cardiac Output Measurements (USCOM) to Improve Donor Management: A Pilot Study**

Stephanie S. Collazo, MD, PhD, MSN, CDE, DPC, FPM; Maria Stadtler, MD, DPC, DPC, FPM; Karen Samartan, MD, MS, DPH, DPC; Adam Teller, DPC; Anna Komac-Pazur, MD, DPC; Anna Otero, MD, MS, CDE; David Peterson, MPA; David Walker, MD; Tracymary Lou, Los Angeles, California and Torrey Pines University Medical Center, Los Angeles, California

**Purpose**  
To determine whether USCOM can guide organ donation decisions and improve organ donation management. USCOM is a non-invasive, portable, and easy-to-use device that provides real-time, continuous cardiac output (CO) measurements. The device is used to measure CO in organ donors and recipients. The study was conducted in a single center, and the results were compared to those of a traditional CO measurement method (thermodilution).

**Results**  
• USCOM cardiac output measurements were accurate and reliable.  
• USCOM measurements were obtained in 100% of organ donors and recipients.  
• USCOM measurements were obtained in 100% of organ donors and recipients.  
• USCOM measurements were obtained in 100% of organ donors and recipients.  
• USCOM measurements were obtained in 100% of organ donors and recipients.

**Methods**  
USCOM Level of Care (Amount of Fluid Administered)

**Conclusions**  
• USCOM is a non-invasive, portable, and easy-to-use device that provides real-time, continuous cardiac output (CO) measurements. The device is used to measure CO in organ donors and recipients. The study was conducted in a single center, and the results were compared to those of a traditional CO measurement method (thermodilution).

**Acknowledgments**  
• The authors would like to thank the following individuals for their assistance in the study: [List of names]

**DONATE LIFE**

# Spanning the Southland

From Santa Maria to Lynwood  
to communities throughout the

## LOS ANGELES COUNTY - SOUTH

Oct 30-31	Wilmington	Table	ConocoPhillips Halloween
Nov 6	Carson	Table	Fall Health Fair
Feb 25	Long Beach	Table	Body/Soul Wellness , St. Mary Medical Center
Mar 2	Long Beach	OL Event	Donor Remembrance Ceremony
Mar 9	Long Beach	Table	Mitzvah Day
Apr 15	Carson	Table	Cal State San Dominguez Hills Health Fair
Apr 16	Torrance	AMB Speaker	Donor Recognition Ceremony, Harbor-UCLA Medical Center

## LOS ANGELES COUNTY - CENTRAL

Nov Various	Hollywood	Table/AMB Speaker	"The God Committee"
Nov 3	Los Angeles	Table	Synergy Family Health Fair
Nov 8	Pasadena	Table	Healthcare Decisions Week
Nov 9-11	Pomona	Table	California Bike Week
Jan 17	Pasadena	AMB Speaker	Donation A-Z Class , Huntington Hospital
Jan 21	Los Angeles	Parade Entry	Kingdom Day Parade
Feb 17	Los Angeles	Table	UCLA vs. USC Basketball
Mar 1	Los Angeles	OL Event	Donor Remembrance Ceremony
Mar 2	Los Angeles	OL Speaker	Morning Service, McCarthy Christian Church
Mar 6	Los Angeles	Table	Cal vs. USC Basketball
Mar 8	Monterey Park	OL Event	Donor Remembrance Ceremony
Mar 9	Calabasas	OL Speaker	Driving School Association
Mar 13	Los Angeles	AMB Speaking	World Kidney Day, Holman United Methodist Church
Mar 29-30	North Hollywood	Table/Event Staff	4th Annual Frankie Hernandez Legacy of Life Baseball Tournament
Apr 4	Covina	Table	Covina Valley Unified School District Health Fair
Apr 6,13	Pasadena	AMB Speaker/Table	Donor Sabbath, All Saints Church
Apr 12-13	Los Angeles	Table	NBC4/Telemundo 52 Health and Fitness Expo
Apr 22	Los Angeles	Table	Fitness and Health Fair
Apr 23	La Mirada	Table	Biola University Health Fair
Apr 27	Los Angeles	Table	Salt Creek Grille

## LOS ANGELES COUNTY - NORTH

Nov 8	Sherman Oaks	AMB Speaker	Collaborative Learning Session
Mar 15	Lancaster	Table	Poker Run, Coaches Sports Bar & Grill

## KERN COUNTY

Oct 30	Bakersfield	AMB Speaker	Collaborative Learning Session
Nov 15	Tupman	Table	Health Fair
Feb 9	Bakersfield	Table	East Hills Mall Heart & Stroke Expo
Mar 4	Bakersfield	AMB Speaker	Bakersfield Rotary Club

## ORANGE COUNTY

Nov 6	Costa Mesa	AMB Speaker
Jan 26	Santa Ana	AMB Speaking
Feb 9-10	Garden Grove	Table
Feb 12	Fullerton	OL Speaker
Feb 20	Fullerton	OL Speaker
Feb 22	Fullerton	OL Speaker
Mar 3	Fullerton	OL Speaker
Mar 4	Costa Mesa	Table
Mar 4	Fullerton	OL Speaker
Mar 13	Brea	OL Speaker
Mar 15-16	Irvine	Table
Mar/Apr Var	Fullerton	Table
Apr 3	Fullerton	Table
Apr 8	Stanton	Table
Apr 9	Santa Ana	Table
Apr 16	Irvine	Table
Apr 16	Orange	Table
Apr 17,24	Mission Viejo	Table

## SANTA BARBARA/VENTURA

Nov 1	Santa Barbara	AMB Speaker
Apr 20	Santa Barbara	Table
Jan 27	Oxnard	Table
Mar 16	Ventura	Table
Mar 24	Ventura	AMB Speaker
Apr 1	Santa Paula	Table

## RIVERSIDE & SAN BERNARDINO

Jan 20	Riverside	OL Speaker
Feb 7	Perris	Table
Mar 26	San Bernardino	AMB Speaker
Apr 7	Fontana	Table/Event Staff
Apr 8	Apple Valley	Table
Apr 9	Chino Hills	Table
Apr 27	Moreno Valley	Table
May 2	March ARB	Sponsor
May 3-4	March ARB	Table
May 7	Hemet	AMB Speaker
Mar 9	Redlands	OL Event



...nd, Indio to El Segundo, and Canyon Lake to San Dimas, Donate Life Ambassadors and OneLegacy professionals reach out to the greater Los Angeles area.

Collaborative Learning Session  
Brighton Go Red  
Tet Festival New Year Celebration  
Fullerton School District  
Fullerton Radio Club  
Troy High School  
Troy High School  
Automobile Club of So Cal. Blood Drive  
Fullerton School District  
WaMu  
Evan Cousineau Bone Marrow Drive  
Cal State Fullerton Save A Life Campaign  
Fullerton College Healthy Bodies, Healthy Mind  
Boy Scout Blood Drive  
Western Medical Center National Donate Life Month  
National Donate Life Month, UC Irvine  
National Donate Life Month, St. Joseph Hospital  
National Donate Life Month, Mission Hospital

## VENTURA COUNTIES

Collaborative Learning Session  
Earth Day 2008  
Tet New Year Celebration  
Cottontail Day  
Ventura County Medical Center Nurses Class  
Santa Paula DMV

## SAN BERNARDINO COUNTIES

Estate Planning, Universalist Unitarian Church of Riverside  
EMWD's Wellness Committee Health Fair  
Kiwanis of San Bernardino  
A Ride Across America Spring Golf Classic 2008  
Donate Life Awareness Day  
Chino Hills High School Donate Life Day Health Fair  
Donate Life ATV's Across America Homecoming  
March Air Reserve Base Air Show  
San Jacinto Rotary Club  
Donor Remembrance Ceremony

## King Day, Chinese New Year Parade Floats Engage Multicultural Los Angeles Crowds

Donate Life California celebrated the Martin Luther King Day and Chinese New Year holidays with inaugural Donate Life float entries.

The Kingdom Day Parade float, themed "The Gift of Life Around the World", featured a multicultural mix of fifteen recipients, living donors, donor family members, transplant candidates, and healthcare providers united in celebration of the gift of life aboard a 36-foot-long float.

"Dr. King's vision was for a global community inspired to help one another no matter their race, creed or color," said float committee chairwoman and lung recipient Eunice Gibson of Los Angeles. "This vision is shared by Donate Life and people who save or heal others as organ and tissue donors. When people say yes to donation, the dreams of transplant recipients are realized."

The Kingdom Day Parade float entry was coordinated by OneLegacy and sponsored by 17 organizations and individuals, including platinum sponsors Heart to Heart Foundation, Lovick Career Journal, OneLegacy, Soul Patrol, Inc., Starbucks, and Uncle Darrow's Restaurant. Organizers were presented with the Governors Award in recognition of the committee's inspired effort.

Weeks later, Donate Life celebrated the Lunar New Year with its first float entry in the Los Angeles Chinese New Year Golden Dragon Parade. Themed "Giving is the Greatest Reward", the 36-foot-long float featured fifteen float riders between the ages of six and 50, including transplant recipients, family members of organ and tissue donors, physicians, and representatives from the Buddhist Tzu Chi Foundation. The multicultural audience was urged to follow the teachings of Tzu Chi Master Cheng Yen: "Respect nature, love the Earth, and do good deeds" by saying yes to organ and tissue donation. 🌐

*Sabrina Ho and Ralph Sutton contributed to this story.*



Donate Life's float entries in the Martin Luther King (top) and Chinese New Year parades utilized the same structure as a cost- and time-saving measure.

# Volunteer Program Celebrates Five-Year Anniversary

BY STEPHANIE SCHMITZ

It seems like only yesterday that 47 donor family members, transplant recipients, healthcare professionals and donation advocates gathered in Glendale, Calif. to inaugurate OneLegacy's volunteer program. Since that day in February 2003, the Donate Life Ambassadors program has become a vital component of the Donate Life mission.

The Ambassadors program was established as a structured way for donation advocates to obtain correct information about donation, equipping themselves to be the voice of our community in their communities. Under the leadership of program founder Tenaya Wallace, Communications Specialist and now Stephanie Schmitz, Volunteer and Community Events Coordinator, more than 600 trained Ambassadors have participated in 1,600 community events over the past five years, including health fairs, city proclamations, houses of worship, civic organizations, hospitals, high schools, workplaces and DMV field offices.

Schmitz encourages trained Ambassadors to create new opportunities to inspire the diverse communities of greater Los Angeles to

donate life. We are committed to providing Ambassadors the knowledge, materials and tools they need to act as entrepreneurs for donation, said Schmitz. As an example, Schmitz points out that some Ambassadors are trained to pitch stories to their local papers, and others have adopted their local DMV field offices.

Of the inaugural class of Ambassadors, most are still active, with several evolving into community leaders in their own right. Lung recipient Eunice Gibson chairs the Donate Life Kingdom Day Parade Float Committee and educates nursing students about the important roles they play in the donation process. Donor sister Laurie Wolowic founded and chairs the Family Circle Rose Dedication Program and serves on the Donate Life Rose Parade Float Committee. Living kidney donor Kevin Monroe serves on the Donate Life Rose Parade Float and Family Circle Advisory committees and spearheads the Donate Life ATVs Across America tour. All three have been honored as Donate Life Rose Parade float participants and serve on the Ambassadors



Please see **AMBASSADORS**, Page 13

## Bosley, WaMu: Workplace Partners in Action!

BY KATHLEEN HOSTERT

The spirit of partnership is alive and well as two of the region's most visible companies step up to support the Donate Life mission.


Bosley Hair Replacement of Beverly Hills provides patients around the country and throughout the world with the latest



Michael May, Human Resources Manager, places dedicated roses on the 2009 Donate Life float on behalf of all U.S. Bosley offices.

advances in hair transplant technology. Inspired by the experience of Bosley Team Member Kairi Saan, Executive Administrator to the COO and Medical Director, whose lifetime friend Ingrid found herself in need of a heart transplant, Bosley signed on as a Donate Life Workplace Partner in 2007. Bosley activated 85 surgical centers and offices nationwide to inspire their employees and patients to be donors, with in-services by Donate Life America member organizations and Donate Life brochure stands at every location. Locally, Bosley participated in the Donate Life Rose Parade float's Family Circle Rose Dedication Program and will enter a team of walkers at the Donate Life Run/Walk on April 26. For more information on Bosley, visit [www.bosley.com](http://www.bosley.com)

For a second consecutive year, Washington Mutual is setting up Donate

Life display boards and selling Donate Life mints to their customers throughout April in 21 financial centers in Orange County and eastern Los Angeles County. Last year, the Donate Life campaign thrived amidst more than 800,000 customer transactions. WaMu will return as a top-tier sponsor at the Donate Life Run/Walk. For more information about WaMu, visit [www.wamu.com](http://www.wamu.com). 



In April 2006, WaMu's Brea Branch piloted a program that has spread to 21 financial centers in Los Angeles and Orange counties.

# High School Program Drives Designations



OneLegacy staff and Donate Life Ambassadors have been busy educating first-time drivers about their opportunity to sign up with the Donate Life California Registry on their DMV drivers license applications, including the following schools between Nov. 2007 & June 2008:

Alta Loma	Rancho Cucamonga High School*
Anaheim	Fairmont Preparatory High School*
Bakersfield	Centennial High School**
	Foothill High School**
	Frontier High School**
	Garces Memorial High School**
	Highland High School**
	Liberty High School**
	North High School**
	South High School**
Burbank	John Burroughs High School**
Carpinteria	Carpinteria High School*
Chino	Chino High School
Costa Mesa	Costa Mesa High School**
Covina	Charter Oak High School**
Garden Grove	Bolsa Grande High School**
Glendale	Glendale Adventist Academy
Granada Hills	Granada Hills Charter High School**
Huntington Beach	Huntington Beach High School
	Marina High School
Irvine	Northwood High School*
	University High School*
	Woodbridge High School**
La Habra	La Habra High School*
La Mirada	La Mirada High School**
Lake Elsinore	Lake Elsinore High School**
	Lakeside High School*
	Terra Cotta Middle School*
Lake Isabella	Kern Valley High School*
Lakewood	Artesia High School
Lompoc	Lompoc High School**
Los Angeles	Belmont High School
	Bravo Medical Magnet School**
	Fremont High School**
	Miliken Community High School**
Mission Viejo	Silverado High School*
Oxnard	Pacifica High School
	St. Bonaventure High School*
Pasadena	Maranatha High School**
Placentia	El Camino Real High School
Pomona	Garey High School
Redondo Beach	Redondo Shores High School**
San Bernardino	San Geronio High School**
Santa Barbara	San Marcos High School*
	Santa Barbara High School**
Sherman Oaks	Notre Dame High School*
West Covina	East San Gabriel Valley R.O.P.**
Westlake Village	Westlake High School*
Whittier	La Serna High School**

\* Ambassador presentation

\*\* OneLegacy staff with Ambassador

# Donation in the Media

## DONATE LIFE ROSE PARADE FLOAT

Approximately 110 regional media stories focused on Donate Life's fifth Rose Parade float entry, including the following outlets:

### General

**Reg. Newsp:** Antelope Valley Press, Bakersfield Californian (2x), Desert Sun (3x), Inland Valley Daily Bulletin (4x), LA Daily News (2x), Long Beach Press-Telegram, Los Angeles Times, Orange County Register (4x), Press-Enterprise (3x), San Bernardino County Sun, San Gabriel Valley (Calif.) Tribune (2x), Santa Barbara News-Press (2x), Ventura County Star (2x)

**Loc. Newsp:** El Chicano (San Bernardino), Friday Flyer (Canyon Lake) (2x), Inland Valley News (Pomona), L.A. Watts Times, L.A. Sentinel/La Canada Valley Sun (2x), Los Angeles Sentinel, Orange City News, Our Weekly, Pasadena Star-News, San Fernando Valley Sun, Whittier Daily News

**TV:** KCBS-2 (4x), KNBC-4 (2x), KABC-7 (4x), KCAL-9 (2x), KTLA-5 (CW), KTTV-11 (FOX), KGET-17 (NBC) Bakersfield (2x), KERO-23 (ABC) Bakersfield, KDOC-TV Orange County (2x), KESQ-3 Palm Desert, KEYT-3 (ABC) Santa Barbara (2x)

**Radio:** KABC Radio, KFVB News 980, KKLA 99.5FM (2x), KLOS 95.5FM, KOST 103.5FM (2x), KPCC 89.3FM

### Spanish

**Print:** El Sol del Valle de San Fernando, Hoy (2x), La Opinion (2x), La Prensa del Mojave, MAS (Bakersfield), Montebello Comet, Mundo LA, OC Excelsior

**TV:** KWHY-22 (Telemundo) (2x), KMEX-34 (Univision) (3x), KVEA-52 (Telemundo) (2x), KRCA-62, Mega-TV, Univision (National)

### Asian

**Print:** Asian Journal (2x), Chinese Daily News (4x), EDI Magazine (2x), Korea Daily, Korea Times, Sing Tao (2x), Viet Weekly Magazine

**Nat'l TV:** CTI TV, ETTV, Great Love TV, HVH-TV, KBS-44, Sky Link (2x), TVK24, VHN-TV, VHV-TV

**Radio:** AM 1300/AM1600 (3x), AM1370, Radio Little Saigon

## Summary of Coverage

LOS ANGELES	TV	Radio	Newsp	Mag	ALL
General Market:	27	8	37	0	74
Spanish:	13	0	9	1	23
Asian:	1	5	8	0	14
<b>Total:</b>	<b>41</b>	<b>13</b>	<b>54</b>	<b>1</b>	<b>111</b>
NATIONWIDE	TV	Radio	Newsp	Mag	ALL
General Market:	99	19	181	9	294
Spanish:	15	0	14	3	34
Asian:	11	5	8	5	29
<b>Total:</b>	<b>125</b>	<b>24</b>	<b>203</b>	<b>17</b>	<b>375</b>

# Spanish Event Among Donor Remembrance Ceremonies

OneLegacy's annual "Fields of Gold" Donor Remembrance Ceremonies are a March tradition. This year, 160 organ and tissue donor families attended four ceremonies. Joining UCLA, Loma Linda University, and the Hyatt Regency Long Beach was first-time venue Luminarias in Monterey Park, which had the distinction of hosting the first-ever donor ceremony presented entirely in Spanish. Musical performances, donor family and recipient speakers, and moving video tributes left families feeling close to their loved ones and appreciated for their decisions to donate life.



For the first time, OneLegacy Family Services staff acted as keynote speakers. (1) Jeff Fleming, Director of Family Services hosted the three English-language ceremonies, while (2) Luz Diaz, Aftercare Specialist, hosted the Spanish-language ceremony. At Monterey Park, (3) lung recipient Gloria Rodriguez thanked the 400 donor family members for her gift of life; (4) OneLegacy CEO Tom Mone read a Spanish-language poem he composed for the occasion; and (5) heart recipient Mario Gonzalez accompanied Candi Sosa in a moving musical tribute. (6) At each ceremony, families were invited to place rose petals in a bowl as they approached the stage to receive (7) "Life Bridges" pin and pendant sets. (8) Children attending the ceremonies were provided with grief-themed coloring books, helping them explore the feelings of loss that accompany organ and tissue donation.



Victor and Jennifer Choe hold the completed Donate Life Rose Parade float floragraph of daughter Erin. Standing with them is Kelly Sim of Renton, Wash., with the floragraph of her husband Johnathan. Two dozen donor families journeyed to Pasadena in December to personally decorate portraits of their loved ones that adorned the Donate Life float in the 2009 Rose Parade.

## ERIN: "Sparkling princess of God"

*Continued from Page 1*

strength and the peace of God guided our family to focus on donation to give others an opportunity to enjoy life just as Erin did. Having an older daughter with vision impairment helps us empathize even more and gain a deep sense of gratitude when Erin's cornea tissues restored the vision of two people.

Erin lived her short, five years to the fullest because she showed compassionate love to everyone around her. We are now committed to carrying out her zest for life. It is beautiful to see Erin's legacy continue through tissue donation. In addition, her website ([www.erinchoe.com](http://www.erinchoe.com)) continually draws people to find hope and encouragement, especially for those who had a tough day.

*"Sparkling princess of God, have a great time with Jesus.*

*See you soon, Baby Erin."*

*- Mommy & Daddy*

## AMBASSADORS

*Continued from Page 10*

Advisory Committee.

The Donate Life Ambassadors program continues to grow, reaching out to transplant centers, support groups, and community groups to encourage broader participation. One-day training workshops for new-

## 2007: Consent Rate Peaks

*Continued from Page 1*

to 50 people, it is very gratifying to know we contribute to the wellness of so many in our diverse communities.

In another promising development, ten organ donors and 55 tissue donors in OneLegacy's seven-county service area were recovered with authorization through the Donate Life California Registry, which is co-managed by OneLegacy with the state's three other organ recovery agencies. With the state-authorized donor registry adding one million designated donors every eight months, the impact of the registry is increasing each quarter. In Q4 2007, more than three percent of organ donors and nearly seven percent of tissue donors in the greater Los Angeles area had signed up on the registry.

While we are seeing real progress, the need for donated organs and tissues remains as great as ever, said Mone. We will continue to expand our capabilities to ensure that donor families and transplant recipients, their families and our community as a whole benefit from the gift of organ and tissue donation. @

## RESEARCH

*Continued from Page 7*

Stadtler cites one of OneLegacy's research milestones, the recently completed Chagas study (see sidebar on page 7). Using a questionnaire, we asked the family about Chagas disease risk factors that the donor was exposed to. What we learned is that we have to perform a blood screening on every donor because we couldn't make any assumptions based on the questionnaire. Testing for Chagas protects recipients from being infected through the transplant, and as a result of this study, OneLegacy was the first OPO in the country to perform universal pre-donation screening for Chagas.

With literally dozens of research projects in various stages of investigation, Stadtler looks forward to sharing results that fulfill the potential for helping recipients and donor families alike. @

comers are offered every February and September, and trained Ambassadors can attend advanced workshops to improve speaking skills and stay up to date on donation trends.

OneLegacy thanks and congratulates every Donate Life Ambassador who gives so much of their time, effort and spirit in building a donation-friendly culture in Southern California. May the next five years be as prosperous. @

# Hospital Referral Data

	Organ Refer	Elig Refer	Organ Donors	Organs Tx'd
<b>KERN COUNTY</b>				
Bakersfield Heart Hospital	1	0	0	0
Bakersfield Memorial Hospital	24	2	1	5
Delano Regional Medical Center	5	0	0	0
Kern Medical Center	80	17	9	41
Mercy Hospital	75	7	3	8
Ridgecrest Regional Hospital	3	0	0	0
San Joaquin Community Hospital	39	7	5	8

	Organ Refer	Elig Refer	Organ Donors	Organs Tx'd
<b>LOS ANGELES COUNTY - CENTRAL</b>				
Alhambra Hospital Medical Center	3	0	0	0
Brotman Medical Center	4	2	2	3
California Hospital Medical Center	74	15	8	28
Cedars-Sinai Medical Center	70	7	3	4
Century City Doctor's Hospital	4	0	0	0
Children's Hospital Los Angeles	27	5	1	3
Citrus Valley Intercommunity Hospital	14	2	1	3
Citrus Valley Med Ctr - Queen of the Valley	25	3	2	5
City of Angels Medical Center	2	0	0	0
City of Hope National Medical Center	1	0	0	0
East Los Angeles Doctors Hospital	1	0	0	0
Garfield Medical Center	16	4	1	3
Good Samaritan Hospital	26	5	1	3
Greater El Monte Community Hospital	4	0	0	0
Kaiser Permanente Baldwin Park Med Ctr	10	0	0	0
Kaiser Permanente Los Angeles Med Ctr	70	12	4	17
Kaiser Permanente West LA Med Ctr	26	3	3	8
Kindred Hospital Los Angeles	1	0	0	0
LAC + USC Medical Center	132	29	20	71
Los Angeles Community Hospital	1	0	0	0
Monterey Park Hospital	1	0	0	0
Olympia Medical Center	4	1	0	0
Pacific Alliance Medical Center	3	0	0	0
Pomona Valley Hospital Medical Center	34	9	6	14
Queen of Angels / Hollywood Pres Med Ctr	21	6	4	18
San Dimas Community Hospital	6	1	0	0
San Gabriel Valley Medical Center	4	0	0	0
St. John's Hospital and Health Center	6	2	1	2
St. Vincent Medical Center	4	0	0	0
UCLA Medical Center - Santa Monica	4	0	0	0
UCLA Medical Center - Westwood	99	15	9	25
USC University Hospital	12	0	0	0
VA Greater Los Angeles Healthcare System	1	0	0	0
White Memorial Medical Center	26	2	2	7

	Organ Refer	Elig Refer	Organ Donors	Organs Tx'd
<b>LOS ANGELES COUNTY - NORTH</b>				
Antelope Valley Hospital	41	7	3	2
Encino-Tarzana Reg Med Ctr, Tarzana	9	2	1	7
Foothill Presbyterian Hospital	5	0	0	0
Glendale Adventist Medical Center	9	3	2	7
Glendale Memorial Hospital and Health Ctr	27	0	0	0
Henry Mayo Newhall Memorial Hospital	22	5	3	5
Huntington Hospital	67	11	8	28
Kaiser Permanente Panorama City Med Ctr	12	3	0	0
Kaiser Permanente Woodland Hills Med Ctr	10	1	0	0
LA County Olive View / UCLA Medical Ctr	2	0	0	0
Lancaster Community Hospital	11	1	1	4
Methodist Hospital of Southern California	19	6	2	4
Mission Community Hosp - Panorama City1	0	0	0	0

	Organ Refer	Elig Refer	Organ Donors	Organs Tx'd
Motion Picture and Television Fund Hospital	1	0	0	0
Northridge Hospital Medical Ctr - Roscoe	37	9	7	31
Pacifica Hospital of the Valley Med Ctr	4	0	0	0
Providence Holy Cross Medical Center	39	12	6	21
Sherman Oaks Hospital and Health Center	1	0	0	0
St. Joseph Medical Center	31	4	2	7
Valley Presbyterian Hospital	9	0	0	0
Verdugo Hills Hospital	5	2	2	6
West Hills Regional Medical Center	6	0	0	0

	Organ Refer	Elig Refer	Organ Donors	Organs Tx'd
<b>LOS ANGELES COUNTY - SOUTH</b>				
Beverly Hospital	23	5	4	14
Centinela Freeman Reg Med Ctr, Centinela	54	13	5	11
Centinela Freeman Reg Med Ctr, Marina	5	0	0	0
Coast Plaza Doctors Hospital	3	0	0	0
Downey Regional Medical Center	33	8	6	19
Kaiser Permanente Bellflower Med Ctr	2	1	0	0
Kaiser Permanente Harbor City Med Ctr	7	1	1	0
LA County Harbor-UCLA Medical Center	63	15	11	41
Lakewood Regional Hospital	14	8	4	6
Little Company of Mary - San Pedro Hospital	25	1	1	5
Little Company of Mary Hospital	34	4	2	7
Long Beach Community Medical Center	4	1	1	1
Long Beach Memorial Medical Center	48	17	5	15
Martin Luther King, Jr.-Harbor Hospital	19	3	1	1
Memorial Hospital of Gardena	13	2	1	7
Miller Children's Hospital	10	6	4	22
Presbyterian Intercommunity Hospital	27	2	1	2
Rancho Los Amigos Medical Center	1	0	0	0
St. Francis Medical Center	96	29	16	58
St. Mary Medical Center	32	9	4	12
Torrance Memorial Medical Center	63	2	1	1
Whittier Hospital Medical Center	2	0	0	0

	Organ Refer	Elig Refer	Organ Donors	Organs Tx'd
<b>ORANGE COUNTY</b>				
Anaheim General Hospital	1	0	0	0
Anaheim Memorial Medical Center	25	2	0	0
Chapman Medical Center	3	0	0	0
Childrens Hospital of Orange County	29	5	1	0
CHOC at Mission	2	0	0	0
Coastal Communities Hospital	9	2	2	6
Fountain Valley Reg Hospital and Med Ctr	45	2	1	5
Garden Grove Hospital and Medical Center	8	0	0	0
Hoag Memorial Hospital Presbyterian	44	12	8	19
Huntington Beach Hospital	1	0	0	0
Irvine Regional Hospital and Medical Ctr	2	0	0	0
Kaiser Permanente Anaheim Med Ctr	64	12	4	14
Kindred Hospital Westminster	3	0	0	0
La Palma Intercommunity Hospital	5	0	0	0
Los Alamitos Medical Center	11	2	2	6
Mission Hospital Regional Medical Center	19	6	6	25
Orange Coast Memorial Medical Center	2	0	0	0
Placentia Linda Community Hospital	1	0	0	0
Saddleback Memorial Medical Center	18	1	0	0
San Clemente Hospital	1	0	0	0
South Coast Medical Center	1	0	0	0
St. Joseph Hospital	21	5	3	4
St. Jude Medical Center	26	2	1	3
UCI Medical Center	136	30	16	54

# January 1 to December 31, 2007

	Organ Refer	Elig Refer	Organ Donors	Organs Tx'd
West Anaheim Medical Center	3	0	0	0
Western Medical Center Anaheim	13	3	1	3
Western Medical Center Santa Ana	81	21	16	64

## RIVERSIDE & SAN BERNARDINO COUNTIES

Arrowhead Regional Medical Center	131	35	27	83
Barstow Community Hospital	1	0	0	0
Chino Valley Medical Center	2	0	0	0
Community Hospital of San Bernardino	11	1	0	0
Corona Regional Medical Center	16	2	2	3
Desert Regional Medical Center	88	19	9	25
Desert Valley Hospital	4	1	0	0
Eisenhower Memorial Hospital	23	7	4	9
Hemet Valley Medical Center	18	1	0	0
Inland Valley Regional Medical Center	28	4	1	4
Jerry L. Pettis Memorial VA Medical Ctr	1	0	0	0
John F. Kennedy Memorial Hospital	13	2	1	5
Kaiser Permanente Fontana Medical Ctr	97	17	10	20
Kaiser Permanente Riverside Med Ctr	22	0	0	0
Loma Linda University Medical Center	180	45	31	92
Menifee Valley Medical Center	3	0	0	0
Moreno Valley Community Hospital	1	0	0	0
Parkview Community Hospital Med Ctr	13	1	1	2
Rancho Springs Medical Center	11	1	1	4

	Organ Refer	Elig Refer	Organ Donors	Organs Tx'd
Redlands Community Hospital	6	0	0	0
Riverside Community Hospital	46	13	9	22
Riverside County Regional Med Center	100	19	11	27
San Antonio Community Hospital	50	10	7	23
San Geronio Memorial Hospital	3	1	1	2
St. Bernardine Medical Center	83	1	1	1
St. Mary Regional Medical Center	11	0	0	0
Vencor Hospital - Ontario	4	0	0	0
Victor Valley Community Hospital	8	0	0	0

## SANTA BARBARA & VENTURA COUNTIES

Commy Mem Hosp of San Buenaventura	9	1	1	2
Goleta Valley Cottage Hospital	1	0	0	0
Lompoc District Hospital	3	0	0	0
Los Robles Regional Medical Center	20	6	5	12
Marian Medical Center	16	6	4	14
Santa Barbara Cottage Hospital	25	5	3	7
Santa Paula Memorial Hospital	2	1	0	0
Simi Valley Hospital and Health Care Svcs	16	6	5	15
St. John's Pleasant Valley Hospital	3	1	0	0
St. John's Regional Medical Center	43	13	7	25
Ventura County Medical Center	16	4	2	7
<b>TOTAL</b>	<b>3,611</b>	<b>677</b>	<b>395</b>	<b>1,227</b>

## State, National Data Reflect Impact of Donor Registries

In the fall of 2006, Donate Life America launched the Donor Designation Collaborative (DDC). The DDC is a national effort to improve donation rates by ensuring that each state has an effective system for allowing individuals to designate themselves as



### Donor Designation Collaborative

donors. In addition to helping states create new registries or improve existing registries, the DDC has focused on encouraging state teams to share, test and adopt best practices that measurably improve the number of registered donors.

In just one year, the number of registered donors in the United States increased by more than six million, and the Donate Life California Registry contributed nearly a quarter of this increase. These individuals joined more than 62 million people already designated as life-saving donors to reach a total of 69,037,650 registered donors.

In 2007, 19 percent of organ donors and 27% of tissue donors in the United States had joined their state donor registry before death. In California, 33 organ donors and 75 tissue donors were registered, representing 4% and 3%, respectively, of all donors in

each category. These percentages are projected to eventually reach approximately 20% as the Donate Life California Registry continues to increase its numbers. (In cases where the donor's decision is not documented, the donation decision is the responsibility of the donor's family.)

A key measure of a state donor registry's effectiveness is the donor designation rate, or individuals who join the registry as a percentage of all driver's licenses and ID cards issued. While California's donor designation rate of 21% is below the national rate of 27%, the state compares favorably with other large states such as Florida, Michigan and New York.

The DDC Faculty has determined that in order to maximize their potential to save lives, donor registries should be designed with the following characteristics, such as offering first person consent (versus merely intent), consent for tissue donation, enrollment through a dedicated website, and enrollment at the DMV. California is one of 12 states that meets all eleven of the best-practice design criteria.

With a well-designed registry, an outstanding relationship with the DMV, and robust media campaigns that impact the designation rate, the Donate Life California Registry is fulfilling its promise as an essential tool in OneLegacy's life-saving mission and a model for new and improved state donor registries across the country. @

## Management Team

**Tom Mone**

*Chief Executive Officer and  
Executive Vice President*

**Renee Hawthorne**

*Chief Operating Officer and  
Vice President of Operations*

**Bobby Patton**

*Chief Financial Officer and  
Vice President of Finance*

**Prasad Garimella**

*Chief Information Officer and  
Vice President of Tissue Operations*

**Alan Cochran**

*Vice President of Quality Systems*

**Anita Corliss**

*Vice President of Human Resources*

**Bryan Stewart**

*Vice President of Communications*

**Esther-Marie Carmichael**

*Director, Governance and  
Governmental Affairs*

**Jeff Fleming**

*Director, Family Services*

**Karen Libs**

*Interim Director, Hospital Services*

**Vicki Simmons**

*Director, Information Technology*

**Maria Stadler**

*Director, Research Partnerships*

**Jim Trisch**

*Director, Recovery and Transplant Services*

**Sherry Watson**

*Director, Quality Assurance and  
Performance Improvement*



221 South Figueroa Street, Suite 500  
Los Angeles, CA 90012

**Return Service Requested**

NON-PROFIT  
U.S. POSTAGE  
PAID  
LOS ANGELES CA  
PERMIT #32574

**800-338-6112**

**24-hour line for routine  
notification or donor referrals**

**[www.onelegacy.org](http://www.onelegacy.org)**