

Spring 2007

- 3 Donate Life California Registry Hits Million Mark
- 4 Organ Donor Data
- 5 El Puente
- 6 Photos: Donate Life Rose Parade Float
- 7 Photos: Fields of Gold Donor Ceremonies
- 8-9 Community Events
- 11 \$3 Million Statewide Ad Campaign
- 13 Kingdom Day Parade
- 14 Donor Referral Data
- 15 American Red Cross Partnership



The Bridge

The community newsletter of OneLegacy, the non-profit organ and tissue recovery organization serving the greater Los Angeles area

Upsurge in Lifesaving Donation Extends to Seventh Straight Year

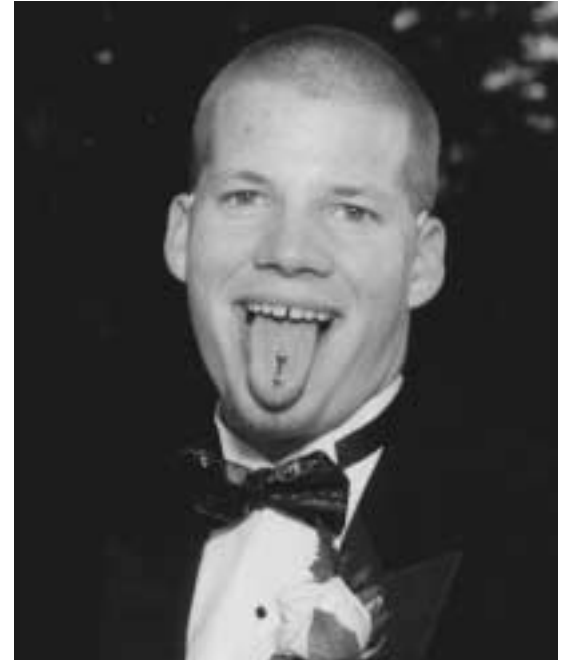
NATIONAL BENCHMARKS SET IN 2006 WITH 432 ORGAN DONORS, 1339 ORGANS RECOVERED

In 2006, OneLegacy achieved a seventh consecutive record-breaking year and national records in donors and lives saved by a single organ recovery organization.

Working in concert with more than 200 hospital partners, OneLegacy coordinated 433 organ donors and the transplantation of 1,339 recovered organs. Both marks set new national records, with a 16% increase in donors and a 9% increase in recovered organs transplanted over the previous year. Since 2000, the number of organ donors and recovered organs transplanted coordinated by OneLegacy has increased 51% and 47%, respectively. Organ donation consent rates — the percentage of families who agree to donation at the time they are approached — increased from 56% to 62%.

We are proud to serve Southern California's multicultural communities with our life-saving mission, said OneLegacy CEO Tom Mone. We are privileged to facilitate individuals' and families' decisions to donate life, which exemplify our capacity to help one another, even at times of overwhelming personal loss.

There are many contributors to OneLegacy's record performance, starting with donors and their families who are so generous at such a difficult time. They are guided by OneLegacy's staff of healthcare professionals, including family care coordinators who are specially trained to guide



Terry Lee Snow

BY KATHY AND JOHN SNOW

In March of 1998 our son, Terry Lee Snow, was in a motorcycle accident in Arizona. Nine days later, that accident claimed his life.

On March 11, 1998, my husband John and I made the difficult decision to remove Terry from a ventilator and donate his organs. He was 19 years old. Our decision and Terry's gift have helped seven people in the states of Arizona, California and Nevada.

The decision was very hard. So much goes through your mind, but ultimately we felt donating his organs was the right thing to do and that Terry would want to do it.

One year later, John and I had the privilege of meeting Tracy Copeland, Terry's liver recipient. After meeting her we spent the next four days together as though we were old

5,000 Participants Expected at 5th Annual Donate Life Run/Walk

Thousands of Southern Californians touched by donation will gather at the 5th Annual Donate Life Run/Walk on Saturday, April 28 at Cal State Fullerton. Proceeds will fund media campaigns promoting enrollment in the Donate Life California Organ & Tissue Donor Registry.

Last year, attendance increased by more than 50% to more than 4,000 registered participants, with 850 donor family

members forming teams in honor of 50 organ and tissue donors.

For a third year, a challenge has been issued to all of the mayors in Orange County to participate in a "Mayor-athon" at the event. As of late March, 15 mayors had committed to walk with constituent donor family members and transplant recipients.

The Circle of Life Garden, which allows donor families and recipients to honor organ and tissue donors with a sign posted in a special designated area, will return after a successful debut last year. More than 100 signs will adorn the meditative area, allowing all participants the opportunity to pay tribute to organ and tissue donors.

For registration and other event information, visit the Donate Life Run/Walk website, www.donatelifecoc.org.



Above, the 2006 Donate Life Run/Walk attracted more than 4,000 participants. At right, the Donate Life Run/Walk Committee, most hailing from Orange County, gathered at the Cal State Fullerton Arboretum for an official photo.



Date

Saturday, April 28

Time

- 7:00am Registration
- 8:15am Pre-Race Ceremony
- 8:45am Warmup
- 9:00am 5K/1K Run/Walk
- 10:00am Family Health Festival

Location

Memorial Grove, Cal State Fullerton

Presenting Sponsors

- Cal State Fullerton
- Cedars Sinai Comprehensive Transplant Center
- OneLegacy
- St. Joseph Hospital Kidney Transplant Program
- UCI Medical Center

Highlights

- Circle of Life Garden
- BMX Show
- Events for Children

Registration & Information

For details go to www.donatelifecoc.org or call 714-526-0181

Crossroads

MILESTONES **Kari Kozuki**, Aftercare Specialist, celebrated the birth of Kara Higuchi on December 1...**Kristine Byer**, Procurement Transplant Coordinator, Long Beach, welcomed the birth of Elizabeth Marie on March 26..

WELCOME **Los Angeles/Corporate:** **Lori Benson**, Quality Systems Specialist...**Gary Colwill**, Network Administrator...**Janelle Payne**, Per Diem Tissue Recovery Technician I...**Michelle Post**, Clinical Aftercare Coordinator...**Luis Ramirez**, Creative Services

Specialist...**Silvia Rosu**, Quality Systems Coordinator II...**Joan Savodelli**, Aftercare Coordinator. **Los Angeles/Wilshire:** **Jesse Mariscal**, Tissue Recovery Technician I...**Kevin Nguyen**, Per Diem Recovery Technician I. **Long Beach:** **Brett Clements**, Recovery Technician I...**David Haynes**, **Margaret Putthoff** and **Summer Williamson**, Procurement Transplant Coordinators. **Redlands:** **Jill Castellanos**, Tissue Recovery Technician I...**Jenna Graciano**, Tissue Recovery Technician II...**Barbra Waite**, Per Diem Tissue Recovery Technician I. **Sherman Oaks:** **Shirin Javid**, Administrative Assistant...**Courtney Lewis**, **Alejandro Medrano** and **Amanda Meyer**, Procurement Transplant Coordinators...**Heriberto "Ed" Salas**, Surgical Recovery Coordinator.

ON THE MOVE **Mario Carrillo** transitioned from Family Care Coordinator to Organ Placement Coordinator...**Robert Coppel** transitioned from Hospital Services Coordinator to Family Care Coordinator...**Esmeralda "Esmi" Mondragon**, formerly in the Finance department, is now the Human Resources Benefits Specialist...**Terেসita Nuila**, a veteran organ placement coordinator, is now a Hospital Services In-House Coordinator at LAC+USC Medical Center.

BEST WISHES We wish the following former OneLegacy employees Gregg Beckham, Jim Hammond and Khanh Hyunh the very best in their future endeavors.

One Million Californians Say Yes to Organ and Tissue Donation

DONATE LIFE CALIFORNIA ORGAN & TISSUE DONOR REGISTRY REACHES MARK IN FIRST SIX MONTHS OF DMV PARTNERSHIP

There is very good news in 2007 for the 20,000 people in need of life-saving transplants in California. More than 1,200,000 Californians have signed up to become organ and/or tissue donors on the state's Donate Life California Organ & Tissue Donor Registry. The large upswell in registrations — which more than quadrupled in a nine-month period — is due predominantly to the ability of Californians to sign up as donors at the same time they apply for or renew driver licenses or I.D. cards at the Department of



Motor Vehicles (DMV) through a program that began July 1, 2006.

As a result of our partnership with the DMV, we have been able to reach Californians that we knew were interested in participating but did not have Internet access to what had been an online-only registry, stated Tracy Bryan, president of Donate Life California, the non-profit organization created in 2004 to administer the donor registry.

According to George Valverde, director of the DMV, "We are so proud that this partnership is truly making a difference and saving lives. Through our involvement in this effort, we've also come to know how the lives of employees in our own DMV family have been touched by organ donation. Some have donated organs to loved ones, received transplants themselves or are still in need of life-saving donations. We're excited about this partnership on their behalf and on behalf of all those who find themselves in need.

Anyone who checks Yes! when applying for or renewing a driver license or I.D. card will be registered with the state-authorized Donate Life California Registry as a donor, with the potential to save eight lives as an organ donor and improve up to 50 others as a tissue donor. Donors can also sign up online at www.donateLIFEcalifornia.org or in Spanish at www.doneVIDAcalifornia.org.

The number of actual organ donors continued to grow



Above, volunteers from Golden State Donor Services, the organ recovery agency serving the Sacramento area, announce the one million milestone with style. Below, Assemblyman Tom Berryhill (R-Modesto) speaks of his heart transplant six years ago as he is joined by his wife and daughter (far left). Standing behind him are Assemblyman John J. Benoit (R-Riverside), DMV Director George Valverde, and Dr. Mark Horton, State Public Health Officer.



statewide as the four organ recovery agencies in the state together recorded 894 donors in 2006, up 11% from record 2005 levels, resulting in more than 2,600 lives saved. In addition, tissue donation increased significantly.

The state's organ recovery agencies attribute the steady growth to a combination of factors, including the U.S. Department of Health & Human Services Organ Donation Breakthrough Collaborative program focusing on hospitals' support of donation, comprehensive public education programs that reach California's diverse communities, and the registry.

Donate Life California is a nonprofit, state-authorized organ and tissue donor registry, administered by California's four nonprofit, federally designated organ procurement organizations, each responsible for facilitating the donation process in the state: California Transplant Donor Network, Golden State Donor Services, Lifesharing and OneLegacy. As a state-authorized pub-

Please see **MILLION**, Page 13

Organ Donation Data

Following are key OneLegacy performance indicators through September 2006. (Source: OneLegacy data)

	Jan	Feb	Mar	Apr	May	Jun	Jul	Aug	Sept	Oct	Nov	Dec	TOTAL
Organ Donors	42	38	41	39	32	38	27	40	32	30	39	34	432
Kidneys Recovered	80	72	78	76	59	70	54	72	56	56	71	63	807
Kidneys Transplanted	64	59	66	63	51	55	49	60	37	51	57	54	666
Extra-Renals Recovered	68	72	64	54	54	61	44	62	38	56	69	69	713
Extra-Renals Transplanted	66	69	62	51	53	55	41	58	34	56	63	65	673
Hearts Transplanted	11	15	9	9	13	13	11	12	4	12	15	14	138
Livers Transplanted	32	26	31	27	25	26	18	31	20	28	32	32	328
Lungs Transplanted	11	19	16	4	9	8	6	9	6	9	11	12	120
Pancreases Transplanted	12	8	6	11	5	8	5	6	3	6	5	5	80
Consent Rate	63.9%	65.2%	59.5%	70.6%	54.5%	55.7%	54.8%	64.3%	61.9%	63.6%	60.9%	63.9%	61.6%
Conversion Rate	66.1%	60.7%	61.2%	65.5%	61.0%	60.3%	51.9%	63.5%	60.4%	61.2%	61.9%	63.0%	61.6%
Organs Recovered	148	144	142	130	113	131	98	134	94	112	140	132	1,520
Organs Transplanted	130	128	128	114	104	110	90	118	71	107	120	119	1,339
Organs Recovered Per Donor	3.52	3.79	3.46	3.33	3.53	3.45	3.63	3.35	2.94	3.73	3.59	3.88	3.52
Organs Transplanted Per Donor	3.10	3.37	3.12	2.92	3.25	2.89	3.33	2.95	2.22	3.57	3.08	3.50	3.10

Catalina Comes Through for First-Time Tissue Recovery

Tissue Services team members (below l to r) Jesse Bravo, Liliana Barrios, David Williams, and photographer Mariam Mollahassani prepare to board the ferry to Long Beach after recovering OneLegacy's



first-ever tissue donor from Catalina Island. According to the team, the people in the small town of Avalon – including hospital nurses, fire department, and police department – were hugely supportive from the moment the team arrived. “Everyone wanted to do their part to make sure this tissue recovery took place,” said Bravo.

U.S. ORGAN TRANSPLANT WAITING LIST STATISTICS

	California	USA
Kidney	15,366	70,870
Liver	3,656	16,946
Pancreas	154	1,733
Kidney/Pancreas	488	2,375
Heart	359	2,847
Lung	303	2,817
Heart/Lung	20	121
Interstine	22	229
Total	19,911	95,323

Source: UNOS. Based on OPTN data as of March 30, 2007

Se necesitan donantes latinos de médula sea

POR ELENA DE LA CRUZ

Cada año, 30,000 personas contraen enfermedades mortales como la leucemia o linfoma que podrán sanar mediante un trasplante de médula sea. De estas personas, el 30% encuentra un donante entre sus familiares, pero el resto, un 70%, depender de la generosidad de los voluntarios inscritos en el Programa Nacional de Donantes de Médula sea (NMDP, siglas en inglés).

Hoy en día están inscritos en este programa casi 4.5 millones de donantes voluntarios, pero solo 2 millones de ellos

pertenecen a una minoría. Eso significa que un hispano tiene menos probabilidades de encontrar un donante compatible. Por ello es muy importante que más personas de grupos minoritarios se hagan la prueba para figurar en el registro.

Inscribirse para ser donante es más fácil que nunca. La necesidad de donantes de grupos minoritarios es tan grande que, para facilitar el proceso, el Hospital City of Hope ha financiado un programa por el cual puede hacerse la prueba cómodamente en su casa, gratuitamente si pertenece a una minoría.

Los únicos requisitos para ser donante de médula sea son tener entre 18 y 60 años de edad y cumplir con ciertos requisitos de salud; hacerse una prueba de sangre para determinar su tipo de tejido; y figurar en la lista del NMDP, la cual es totalmente confidencial. Si en algún momento se determina que es compatible con algún paciente, se pondrán en contacto con usted.

Para saber dónde hacerse la prueba de la médula sea o recibirla en casa llame al (626) 301-8483 (identifíquese como hispano para que se la envíen gratuitamente). @

Eva y Arnoldo Pérez, Embajadores de OneLegacy

POR ELENA DE LA CRUZ

Eva y Arnoldo Pérez celebran muchos aniversarios pero probablemente el más sentido sea el del nacimiento de su hijo, Hernán Aizpuro, quien se convirtió en donante de órganos en 1999 a la edad de 6 años.

El pequeño Hernán, que murió tras un accidente en la nieve cuando la familia disfrutaba de un día invernal en la montaña, sigue estando muy presente en la vida de esta familia: era bien alegre, no me dejaba sola un momento, le gustaba mucho regalarme flores, patinar, hacer todo, le gustaba mucho compartir sus cosas, recuerda Eva.

En OneLegacy no se nos ha pasado desapercibido otro aniversario, el del primer año de embajadores de tanto Eva, como su esposo Arnoldo. Es un título que han paseado con orgullo y que han respaldado con mucho trabajo. Ambos forman un equipo incansable e inspirador en su dedicación a la promoción de la donación en la comunidad latina.

Eva, Arnoldo y sus hijos Carlita y Arnold —y Hazael cuando se anima— son ya una presencia fija en multitud de eventos a los que asiste OneLegacy. Llegan siempre sonrientes y ansiosos por hablar con el máximo número de personas. Según Eva, este tiempo libre que dedican a la causa lo hacen porque la labor de salvar vidas de su hijo no se detuvo con las tres que salvó directamente tras convertirse en donante de órganos.

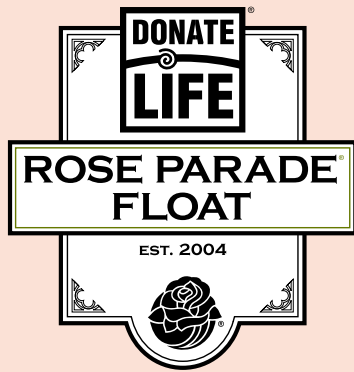
Si nosotros no trabajamos, él no va a seguir salvando más vidas. Él nos inspiró y nosotros seguimos su labor. Nosotros hablamos por él, afirma esta mamá. Antes [de involucrarme] no compartía sobre la donación lo mismo, porque uno piensa que solo uno tiene dolor. A mí me ha ayudado mucho, me ha sanado mucho la herida, se ha convertido en una manera de honrar a mi hijo. @

Eva y Arnoldo Pérez a KMEX-34 "A Su Lado" en julio de 2006. Hernán Aizpuro se convirtió en donante de órganos en 1999 a la edad de seis años.



Donate Life Gives "Heart" to 2007 Rose Parade

On New Year's Day 2007, the Donate Life community was represented for a fourth consecutive year in the world's third most-watched entertainment event, the Rose Parade. Following in the tradition of "A Symphony of Life" (2004), "Many Families, One Gift" (2005), and "Life Transformed" (2006), the 2007 float "Giving From the Heart" featured 23 riders among eight gift-wrapped presents representing gifts of organ, tissue and blood donation.

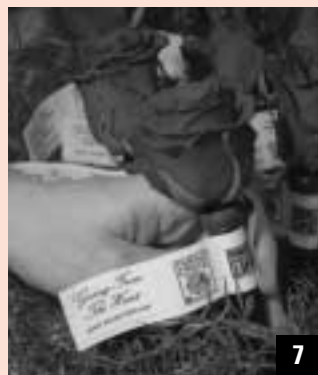
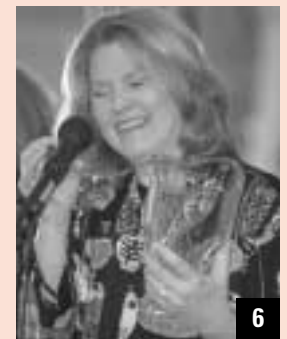


Approximately 40 million U.S. television viewers and millions more in 150 countries watched the parade, as did more than 1,000,000 spectators lining the five-mile parade route. Approximately 207 media stories nationwide reached many millions more (see Page 11).

The national donation community was represented by 57 official partners and riders from 11 states and Canada. In

addition, the Family Circle rose dedication program attracted 1,052 dedications from all 50 states, the District of Columbia, Canada and Europe.

The Donate Life Rose Parade Float Committee looks forward to continuing the float's mission to inspire the world to donate life on New Year's Day 2008.

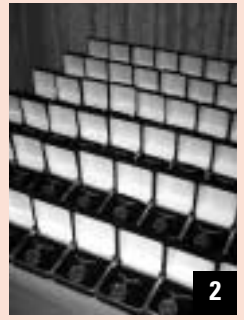


(1) Float rider Shannon Payne, his wife Jeanie, and rider Brenda O'Donnell meet Tagalong the Donate Life Clown at the Phoenix Decorating Co. Rose Palace. (2) UOTA members Colleen Mawas and Debbie Morgan decorate. Groups featured during December's decorating were (3) donor families organized by OneLegacy's Family Services department and (4) the Tzu Chi Foundation. (5) Float riders Dan Sandoval (2nd from left) and Erica Rangel-Báez (far right) join OneLegacy's Elena de la Cruz (center) for an early-morning appearance on Telemundo. (6) Assistant crew chief Karen Libs is overcome upon receiving the Gary P. Foxen Inspiration Award at the Float Riders and Official Partners Reception. (7) The float featured 1,052 roses dedicated through the Family Circle program. (8) More than 100 were placed by dedicating donor family members and recipients themselves, including lung recipient Eunice Gibson. (9) The Team Donate Life operations crew, featuring OneLegacy's Communications team, Family Services staff, and volunteer Ambassadors, celebrates the first day of decorating. (10) Erica Rangel-Báez and Emile Therien waved from the front of the float. (11) "Giving From the Heart" makes an inspiring statement to a worldwide viewing audience. Photos 1,6,8-11 by Scott Weersing.

To view more photos, visit www.donatelifefloat.org.

165 Donor Families Walk Through "Fields of Gold"

OneLegacy's annual "Fields of Gold" Donor Remembrance Ceremonies are a March tradition. This year, 165 organ and tissue donor families attended ceremonies at UCLA, Loma Linda University, and the Hyatt Regency Long Beach. Musical performances, donor family and recipient speakers, video tributes and bird and balloon releases left families feeling close to their loved ones and appreciated for their decisions to donate life.



(1) Ceremony producer and aftercare specialist Kari Kozuki briefs volunteer Ambassadors on their roles. (2) "Life Bridges" pin and pendant sets were presented to all donor families. (3) Jeff Fleming, Director of Family Services, hosted the programs. (4) UCLA's Covel Commons is ready for families to be seated. Guest speakers included donor family members (5) Patti Rivetti, wife of Dennis, and (6) Maria and Jose Bueno, parents of Christy. Recipient speakers included (7) heart recipient and OneLegacy hospital services coordinator Glenn Matsuki and (8) heart recipient Jesus Nava. (9) Heart recipient (and "voice" of Lisa Simpson's sax on "The Simpsons") Terry Harrington gifted families with his musical talent for a fourth year, while (10) guitarist Candi Sosa sang "Gracias Por La Vida" in tribute to the many Latino donor families present. (11) Hospital services coordinators Hedi Aguiar and Annette Gonzalez read the names of donors as families approached the stage. (12) Ambassador Mike Murrie assists with the presentation of pins and pendants to families. (13) (14) Families wrote touching messages to their loved ones before (15) releasing balloons into the sky, here at Loma Linda.



Spanning the Southland

From Carpenteria to Carson, communities throughout the

LOS ANGELES COUNTY - CENTRAL

Feb 13	Rosemead	Table	Don Bosco Technical Institute Health Fair
Feb 14	Pasadena	OL Speaker	Kaiser Hospital Chaplains
Feb 24	Inglewood	Table	3rd Annual Family Health Fair
Feb 24-25	Los Angeles	Table	Chinese New Year Celebration
Mar 3	Los Angeles	Materials	3rd Annual Pre-Health Conference
Mar 3	Los Angeles	OL Event	Fields of Gold Donor Remembrance Ceremony
Mar 7	Baldwin Park	AMB Speaker	San Gabriel Valley Learning Session
Mar 10	Lynwood	Table	Men's Health Fair
Mar 12	Hollywood	Table, OL Spkr	March on Stage at the Hard Rock
Mar 14	Walnut	AMB Speaker	NDLM Proclamation
Mar 16	Los Angeles	Table	Cedars-Sinai Women's Health Conference
Mar 24	Los Angeles	Table	Community Resource, Health, & Book Fair
Mar 24	Los Angeles	Table	Women's Health Forum
Mar 28	Pasadena	Table	Los Angeles Association of Health Underwriters
Mar 30-31	Universal City	Table	Art Laboe Concert
Mar 30-31	Universal City	Table	Art Laboe Concert
Apr 3	Diamond Bar	AMB Speaker	NDLM Proclamation
Apr 14	Santa Monica	Table	Earth Day on the Promenade
Apr 14	Los Angeles	Table	Cedars-Sinai Donor Awareness Picnic
Apr 17	Glendale	AMB Speaker	OneLegacy Staff Meeting
Apr 17	Los Angeles	AMB Speaker	LA County NDLM Proclamation
Apr 20	Alhambra	AMB Speaker	American Red Cross Volunteer Recognition

ORANGE COUNTY

Jan 10	Orange	AMB Speaker
Jan 11	La Habra	AMB Speaker
Jan 14	Yorba Linda	AMB Speaker
Mar 1	Ladera Ranch	Table
Mar 2	Cypress	Table
Mar 4	Laguna Niguel	Table
Mar 5	Seal Beach	Table
Mar 7	La Palma	Table
Mar 8	Cypress	Table
Mar 8	Irvine	Table
Mar 13	Los Alamitos	Table
Mar 16	Mission Viejo	Table
Mar 19	La Harba	AMB Speaker
Mar 20	Laguna Niguel	AMB Speaker
Mar 20	Tustin	AMB Speaker
Mar 25	Lakewood	Table
Mar 26	Cypress	AMB Speaker
Mar 27	Garden Grove	AMB Speaker
Mar 28	Rancho Sta Margarita	
Mar 28	Westminster	AMB Speaker
Mar 29	Anaheim	Sponsor
Apr 2	Los Alamitos	AMB Speaker
Apr 2	Santa Ana	AMB Speaker
Apr 3	La Palma	AMB Speaker
Apr 3	San Juan Capistrano	AMB Speaker
Apr 3	Fullerton	AMB Speaker
Apr 3	Lake Forrest	AMB Speaker
Apr 3	Brea	AMB Speaker
Apr 3	Fountain Valley	AMB Speaker
Apr 3	San Clemente	AMB Speaker
Apr 4	Aliso Viejo	AMB Speaker
Apr 4	Placentia	AMB Speaker
Apr 9	Stanton	AMB Speaker
Apr 10	Orange	AMB Speaker
Apr 10	Seal Beach	AMB Speaker
Apr 10	Buena Park	AMB Speaker
Apr 10	Newport Beach	AMB Speaker
Apr 16	Huntington Beach	AMB Speaker
Apr 17	Anaheim	AMB Speaker
Apr 18	Irvine	Table
Apr 19	Fullerton	Table
Apr 24	Villa Park	AMB Speaker

LOS ANGELES COUNTY - NORTH

Jan 16	Thousand Oaks	AMB Speaker	Thousand Oaks Soroptomist
Feb 21	Glendale	Participant	NASCAR Angels Reveal
Mar 14	Woodland Hills	Table	Pierce College Blood Drive
Mar 15	Woodland Hills	Table	Pierce College Blood Drive
Mar 19	Reseda	Table	Reseda High School Blood Drive
Apr 11	Canoga Park	Table	Canoga Park High School Blood Drive
Apr 25	Chatsworth	Table	Chatsworth High School Blood Drive
Apr 26	Northridge	Table	Northridge High School Blood Drive

LOS ANGELES COUNTY - SOUTH

Jan 27	Whittier	OL/AMB Speaker	American Association of University Women
Feb 5	Long Beach	Table	Body and Soul: Willness Forum
Mar 4	Long Beach	OL Event	Fields of Gold Donor Remembrance Ceremony
Mar 17	Downey	Table	Annual Diabetes Health Fair
Mar 22	Long Beach	Table	Long Beach Community Hospital Blood Drive
Apr 11	Torrance	AMB Speaker	Harbor UCLA Recipient Tea
Apr 11,13	Gardena	Table	Memorial Hospital of Gardena NDLM
Apr 11	Torrance	Table	Harbor UCLA Recipient Pre-tea Health Fair

Palmdale to Palos Verdes, and Moreno Valley to Anaheim Hills, OneLegacy professionals and Ambassadors reach out to greater Los Angeles area.

Rotary District 5320 Presidents Meeting
 La Harbra Rotary Club
 National Donor Sabbath
 American Red Cross Blood Drive
 Cypress PTA Blood Drive
 St. Timothy Cathlic Church Blood Drive
 Equity Office Properties Blood Drive
 Automatic Data Processing Blood Drive
 Church of Jesus Christ LDS Blood Drive
 Mariners Church Blood Drive
 IEEE Computer Society Blood Drive
 Trader Joes Blood Drive
 NDLM Proclamation
 NDLM Proclamation
 NDLM Proclamation
 St. Pancratius Blood Drive
 NDLM Proclamation
 NDLM Proclamation
 AMB Speaker NDLM Proclamation
 NDLM Proclamation
 ESPN So. Calif. Sports Awards
 NDLM Proclamation
 NDLM Proclamation
 NDLM Proclamation
 NDLM Proclamation
 NDLM Proclamation
 NDLM Proclamation
 NDLM Proclamation
 NDLM Proclamation
 NDLM Proclamation
 NDLM Proclamation
 NDLM Proclamation
 NDLM Proclamation
 NDLM Proclamation
 NDLM Proclamation
 UCI Donate Life Day
 It Just Got Real Health Fair
 NDLM Proclamation

RIVERSIDE & SAN BERNARDINO COUNTIES

Jan 11	Parris	Table	Water District Empolyee Health Fair
Feb 5	Rancho Cucamonga	OL/AMB Speaker	Beta Sigma Fi
Feb 9	San Bernardino	Table	Saturn Donor Day
Feb 15	Riverside	OL Speaker	UCR Students for Donation
Feb 24	Riverside	Materials	Homecoming Tailgate at UCR
Feb 25	Riverside	Table	Rivercrest Plaza Grand Opening
Feb 25	Upland	OL Speaker	National Donor Sabbath
Feb 27	Riverside	AMB Speaker	Life Bridge Award Presentation to Riverside County Sheriff Coroner
Mar 1	Riverside	AMB Speaker	Students for Organ Donation Meeting
Mar 5	Palm Desert	Table	Conference for Health Living
Mar 11	Loma Linda	OL Event	Fields of Gold Donor Remembrance Ceremony
Mar 15	Riverside	AMB Speaker	Students for Organ Donation Meeting
Mar 17	Rialto	Table	Promotional Fundraiser
Apr 11	Redlands	Table	VA Hospital

SANTA BARBARA/VENTURA COUNTIES

Jan 7	Goleta	AMB Speaker	St. Raphael Church Youth Group
Jan 13	Los Angeles	Table	5th Annual Liver Symposium
Jan 15	Santa Barbara	AMB Speaker	Santa Barbara Chapter of Retired Teachers
Jan 18	Carpinteria	AMB Speaker	Carpinteria High School
Feb 1	Santa Barbara	Table	Laguna Blanca School
Feb 1	Santa Barbara	Table	Santa Barbara City College Nursing Program
Feb 24	Santa Barbara	Table	Body Electric's FitFest 2007
Mar 13	Ventura	AMB Speaker	Ventura County Student Nurses Training

KERN COUNTY

Feb 6	Bakersfield	AMB Speaker	Bakersfield Rotary Club
Feb 7	Bakersfield	Table	Go Red For Woman
Feb 10	Bakersfield	Table	Heart and Stroke Health Expo
Mar 24	Bakersfield	Table	Wasco Medical Plaza Health Fair



OneLegacy In the Community

(1) OneLegacy Ambassador Pam Endo with congregants at St. Maximilian Kolbe Catholic Church in Westlake Village. (2) DMV San Clemente field office staff were the last of approximately 75 field offices in the greater LA area to be educated about the Donate Life California Registry by OneLegacy Communications staff. (3) Community partnerships coordinator Kathleen Hostert with legendary traffic reporter Commander Chuck Street at the Laguna Road Golf Tournament. (4) OneLegacy CEO Tom Mone (center) presents OneLegacy Life Bridge Awards to Captain Bart Belknap and Sheriff Coroner Gary Penrod of the San Bernardino County Sheriff's Department. (5) Afterwards, OneLegacy Redlands and Sheriff's Department pose for a group photo. (6) Representatives of OneLegacy and the Riverside County Sheriff's Department after a OneLegacy Life Bridge Award presentation to Bob Doyle, Sheriff/Coroner, Riverside County (sixth from left) and the Riverside County Sheriff Coroner's Bureau.



ARCSC: Community Partnership

Continued from Page 15

Cross Blood Services Southern California Region.

OneLegacy Ambassador Kathy Hasan-Sago knows firsthand that without blood donation, her liver transplant would not have been possible. "Words cannot express the gratitude I feel towards the family for making that decision," said Kathy. "It's a true blessing and I'm grateful to have been touched by both organ and blood donation. They go hand in hand!"

To schedule an appointment to donate blood, please call 1-800-GIVE LIFE or visit www.givelife.org.

To organize a blood drive, please call 1-800-491-2113. ☎

Blood Donation: Did You Know...

- The number one reason people don't donate is they weren't asked
- One pint of blood can save up to three or more lives
- By the time we are 75 years old, 80 percent of us will have used blood ourselves
- The Southern California Region needs to collect over 1,500 units of blood each day to meet patient needs.
- On average, 30 to 50 units of blood are used during a liver transplant
- After blood donation, your body restores fluid levels in 48 hours and red blood cells within six weeks.
- Just three percent of the population in Southern California donates blood.

\$3 million Statewide Advertising Campaign to Inspire Donor Designations

APRIL CAMPAIGN FOCUSES ON AFRICAN AMERICAN, ASIAN, LATINO COMMUNITIES

For the Donate Life California Organ and Tissue Donor Registry, April is the right time to launch a \$3 million statewide media campaign targeted specifically to African American, Asian, and Latino communities in eight major markets: Sacramento, Oakland, San Francisco, Stockton, Monterey/Salinas, Los Angeles and San Diego. The radio, television, billboard and transit ads will begin in April, which is National Donate Life Month, and will run for four weeks to highlight the stories of real transplant recipients within California.

Two-thirds of the nearly 20,000 Californians on the waiting list for transplants belong to these communities. Approximately 33% (6,528) are Latino, 17% (3,290) are Asian/Pacific Islander, and 14% (2,792) are African American. Funding for the campaign was made available by a one-time gift from the Kaiser Foundation.

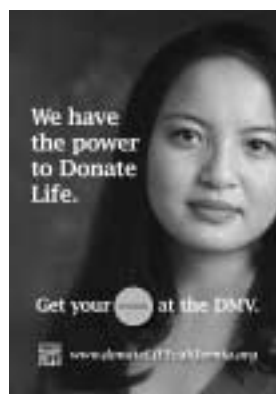
It's imperative to reach these communities to inspire donation, said Bryan Stewart, OneLegacy director of communications and a Donate Life California Registry administrator. By reaching out to communities via the media that reach them, we hope to inspire them to participate in the registry in greater numbers.

Within California and across the nation, minorities are hard hit by hypertension, diabetes, and kidney disorders - diseases that can lead to organ failure and the need for a transplant. The best matches between donors and recipients often lie between members of the same race. Currently, the lack of minority organ donors decreases the number of well-matched kidneys and pancreases available for minority recipients. Increasing the availability of minority donors translates into lives saved within those communities.

In the seven-county greater Los Angeles area, campaign spots will air on Hispanic radio stations KLAX-FM 97.9, KLVE-FM 107.5, KSCA-FM 101.9, KBUE-FM 105.5, KXOL-FM 96.3, and KSSE-FM 107.1, as well as African American stations KPWR-FM 105.9, KHHT-FM 92.3 and KLAC-AM 570, some of which will provide additional support through their on-air personalities.

Approximately 400 billboards and 125 transit ads will also be seen in the

Donate Life California's April media campaign features (clockwise from right) kidney recipient Helen Tran of San Diego, JePahl White of Woodland Hills, and heart recipient Sara Castro of Pico Rivera.



Donation in the Media

DONATE LIFE ROSE PARADE FLOAT

Approximately 72 regional media stories focused on Donate Life's fifth Rose Parade float entry, including the following outlets:

General

Print: Antelope Valley Press, Eastern Group Publications, Friday Flyer (Canyon Lake), La Canada Valley Sun (2x), LA Daily News (2x), Long Beach Press-Telegram, Los Angeles Times, Orange County Register (4x), Pasadena Star-News (2x), Press-Enterprise, San Gabriel Valley (Calif.) Tribune (2x), Santa Barbara News-Press, Ventura County Star (2x), Westside Chronicle News, Whittier Daily News

TV: KCBS-2/KCAL-9, KTLA-5 (CW), KABC-7, KTTV-11 (FOX), KGET-17 (NBC) Bakersfield, KERO-23 (ABC) Bakersfield

Radio: 710 ESPN, KFVB News 980 (2x), KKLA-FM, KLOS 95.5FM (2x), KNX 1070 AM

Spanish

Print: Excelsior (Orange County), Hoy (2x), La Opinion (3x), La Prensa (Riverside), Mundo LA, Porvenir Latino, Vida en el Valle (Central Valley)

TV: KAZA-54 (Azteca America); KRCA-62; KVEA-52 (Telemundo) (2x), KWHY-22 (Telemundo) (2x), KMEX-34 (Univision) (4x)

Asian

Print: China Press, Chinese Daily News (4x), International Daily News (2x), Korea Times, Sing Tao (5x)

TV: SBTN, Skylink TV, TVB Jade Channel, VNCR-TV

Radio: AM 1300, VNCR-Radio

region during the next four weeks.

We hope this campaign will prompt all Californians to make the commitment to donate life and sign up on the registry, said Stewart. Every community has people waiting desperately for someone to say 'yes' to donation. @



2006: National Records Set

Continued from Page 1

families sensitively through the donation process, including requesting consent for donation.

OneLegacy's performance is remarkable given the closure of three local kidney and liver transplant programs in 2006. In California and nationwide, approximately 75% of those on the waiting list seek kidney transplants. Despite these challenges, the number of recovered kidneys and livers transplanted increased 15% and 12%, respectively.

OneLegacy also recovers donated tissue throughout its seven-county service area as an FDA-certified tissue bank. A single tissue donor can give corneas, bone and skin that can enhance the lives of up to 50 people. In 2006, OneLegacy recovered tissue from 886 tissue donors, compared with 397 in 2005, with the increase due primarily to an expansion of tissue recovery responsibilities in partnership with Tissue Banks International.

Twenty-three hospital partners were recognized last October by the U.S. Department of Health & Human Services for meeting the government-sponsored Organ Donation Breakthrough Collaborative goal of a 75% organ donation rate.

In addition, state legislation made it much more accessible for Californians to register their wishes to be organ and tissue donors. By checking 'YES' on driver's license and I.D. card application and renewal forms at the California Department of Motor Vehicles, approximately 5,000 Californians per day are signing up on the Donate Life California Organ & Tissue Donor Registry.

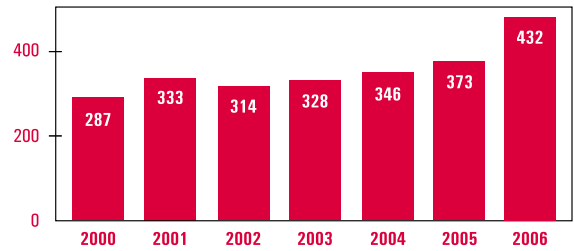
OneLegacy's hundreds of volunteer Ambassadors also played a significant role in inspiring the community to donate life by sharing their stories with the media, organizing community events, participating in April's annual Donate Life Run/Walk at Cal State Fullerton, and decorating the Donate Life Rose Parade Float in Pasadena, which sends a positive message to a worldwide viewing audience each New Year's Day.

As a result of the high performance of OneLegacy and California's three sister agencies, the number of patients listed in California for extra-renal organs remained stable, and in some cases declined slightly. The number of kidney transplant candidates continues to climb, however, and now number more than 15,000 in the state and nearly 70,000 nationwide.

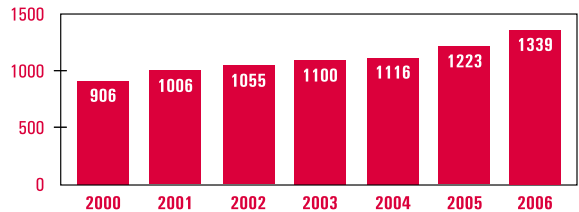
While we are seeing real progress, the need for donated organs and tissues remains as great as ever, said Mone. We will continue to expand our capabilities to ensure that donor families and transplant recipients, their families and communities benefit from the gift of organ and tissue donation and transplantation. ☺

OneLegacy 2006 Performance Data

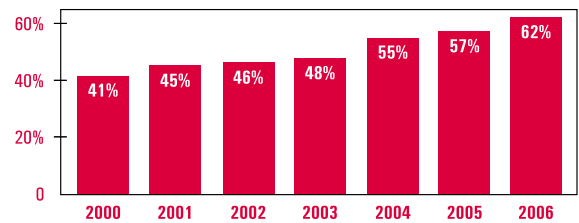
Organ Donors, 2000-2006



Recovered Organs Transplanted, 2000-2006

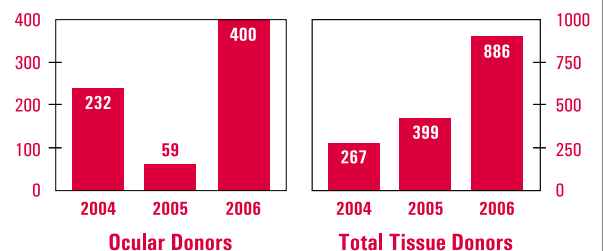


Organ Donor Conversion Rate, 2000-2006*



*Donors as a Percent of Eligible Referrals

Tissue Services Recovery Activity, 2004-2006



Source: OneLegacy data

TERRY: "Our decision and Terry's gift have helped seven people."

Continued from Page 1

friends. Since that meeting we have stayed in contact through phone calls, letters, visits, and emails. We also work as a team to promote organ donation.

From that meeting we learned that Tracy is an avid cyclist and belongs to a cycling team. Her cycling team now wears a jersey with the Donate Life symbol on the front and In memory of Terry Snow on the back.

In 2002 and 2004, Tracy competed in the U.S. Transplant Games. We attended the games as her cheering section. Tracy ended up winning 2 gold medals. My son donated the liver that helped power her victory.

The decision to donate Terry's organs has led us down a path in life that we never anticipated and it has been filled with great joy. 🍷

MILLION: Californians Donate Life

Continued from Page 3

lic service, the registry assures that all personal information is kept confidential and stored in a secure database, accessible only to authorized organ and tissue recovery personnel.

Achieving one million registrants is only our first victory, said Bryan. Our next goal is to see 15 million Californians signed up to donate life by July 1, 2011, when all Californians will have had the opportunity to donate life through the five-year driver's license renewal cycle. We know we can do it, because the people of California have shown they want to save lives. 🍷



Nearly one million DMV customers have checked "Yes" to register as organ and tissue donors and have the pink "DONOR" dot imprinted directly onto the driver's license. Designated donors can specify organs, tissues or applications of their donation via the registry website.

OneLegacy Ambassador Lives Kingdom Day Dream

BY RALPH D. SUTTON

Following a successful double lung transplant at USC University Hospital in February 2002, Eunice Gibson made a solemn vow to inspire African Americans from her community to donate life. Shortly after joining the OneLegacy Ambassadors volunteer program, she had a dream that was finally fulfilled this year on the fifth anniversary of her transplant.

The program allowed me to share my experience in various settings, Gibson recalled. But for 2007, I envisioned a presence that would touch the heart of many African Americans that honor Dr. Martin Luther King. I wanted people to see that the Donate Life mission was a part of our community. My dream was realized with our first-ever entry in the nation's largest celebration of its kind, the Kingdom Day Parade.



Representing the Donate Life mission as "Faces of Organ & Tissue Donation" in the Kingdom Day Parade were (l to r) kidney recipient Tiffany Hall, lung recipient Eunice Gibson, and kidney donor Patricia Abdullah. Driving was Simera Nichols, Youth Education Coordinator.

More than 120,000 people lining the parade route down Martin Luther King Boulevard in South Los Angeles warmly received the Donate Life parade entry. Themed Faces of Donation, two silver cars transported riders who have been touched by organ donation. A contingent of children, each proudly identified with Donate Life T-shirts and rally flags, were sprinkled throughout the crowd.

The first car, driven by Ralph D. Sutton, OneLegacy's African American Community Development Coordinator, featured Jay Ong, B.S.N., a transplant coordinator for UCLA's Lung Transplant Program; donor father Herbert Lewis, riding in memory of his son Devron who saved five lives as an organ donor; and Anise Harkey, riding in honor of her son Daryn.

Riding in the second car, driven by Simera Nichols, OneLegacy's Youth Education Coordinator, were kidney transplant recipient Tiffany Hall; kidney recipient Mike Jones and his living donor, Patricia Abdullah; and Eunice Gibson.

Added Gibson, Praise to all donors and especially mine, who gave me a wonderful second chance, a voice and noble purpose: to inspire the African American community to donate life. 🍷

Donor Referral Data

	Organ Refer	Elig Refer	Organ Donors	Organs Tx'd	Tissue Donors
KERN COUNTY					
Bakersfield Heart Hospital	0	0	0	0	4
Bakersfield Memorial Hospital	23	1	0	0	5
Delano Regional Medical Center	2	1	0	0	2
Kern County Coroner's Office	0	0	0	0	4
Kern Medical Center	97	23	16	65	8
Kern Valley Hospital	0	0	0	0	3
Mercy Hospital	83	6	5	12	11
Ridgecrest Regional Hospital	0	0	0	0	4
San Joaquin Community Hospital	22	4	1	2	4
Tehachapi Hospital	0	0	0	0	2

LOS ANGELES COUNTY - CENTRAL					
Alhambra Hospital	4	2	2	2	2
Brotman Medical Center	2	0	0	0	1
California Hospital Medical Center	71	22	12	36	5
Cedars-Sinai Medical Center	80	15	6	9	6
Century City Hospital	2	0	0	0	2
Children's Hospital Los Angeles	17	6	4	9	4
Citrus Valley Intercommunity Hospital	9	1	0	0	4
Citrus Valley MC - Queen of the Valley Campus	26	4	1	6	3
City of Angels Medical Center	2	0	0	0	0
Garfield Medical Center	13	3	1	3	1
Good Samaritan Hospital	27	2	1	3	6
Greater El Monte Community Hospital	9	1	1	3	3
Hollywood Community Hospital	1	0	0	0	0
Kaiser Permanente Baldwin Park Med Ctr	5	3	1	2	4
Kaiser Permanente Los Angeles Med Ctr	70	7	3	7	3
Kaiser Permanente West Los Angeles Med Ctr	22	2	1	3	1
LAC + USC Medical Center	147	31	18	63	11
Lincoln Hospital Medical Center	1	0	0	0	0
Los Angeles Community Hospital	1	0	0	0	0
Los Angeles County Coroner's Office	0	0	0	0	36
Olympia Medical Center	8	1	0	0	0
Pomona Valley Hospital Medical Center	37	10	8	13	12
Queen of Angels / Hollywood Presbyterian MC	13	2	1	3	1
San Dimas Community Hospital	2	0	0	0	4
San Gabriel Valley Medical Center	10	3	0	0	0
St. John's Hospital and Health Center	8	1	1	2	7
St. Vincent Medical Center	10	0	0	0	1
UCLA Medical Center - Santa Monica	1	0	0	0	2
UCLA Medical Center - Westwood	114	19	11	28	13
USC University Hospital	15	3	2	9	1
White Memorial Medical Center	32	7	3	7	1

LOS ANGELES COUNTY - NORTH					
Antelope Valley Hospital	64	21	12	39	20
Encino-Tarzana Regional Med Ctr, Encino	0	0	0	0	3
Encino-Tarzana Regional Med Ctr, Tarzana	5	1	0	0	1
Foothill Presbyterian Hospital	12	0	0	0	3
Glendale Adventist Medical Center	16	8	3	9	6
Glendale Memorial Hospital and Health Center	18	1	0	0	3
Henry Mayo Newhall Memorial Hospital	24	7	5	15	12
Huntington Hospital	63	11	7	31	4
Kaiser Permanente Panorama City Med Ctr	17	2	1	5	4
Kaiser Permanente Woodland Hills Med Ctr	18	4	3	4	6
LA County Olive View / UCLA Medical Center	4	1	0	0	3
Lancaster Community Hospital	15	0	0	0	2
Methodist Hospital of Southern California	23	6	1	1	5

	Organ Refer	Elig Refer	Organ Donors	Organs Tx'd	Tissue Donors
Mission Cmnty Hospital - Panorama City Campus	5	2	1	3	1
Northridge Hospital Medical Center - Roscoe	28	11	7	18	6
Pacific Hospital of the Valley Med Ctr	6	2	2	8	2
Providence Holy Cross Medical Center	51	10	7	32	10
Sherman Oaks Hospital and Health Center	4	2	1	3	2
St. Joseph Medical Center	30	4	1	5	7
Valley Presbyterian Hospital	18	2	1	0	7
Verdugo Hills Hospital	8	1	0	0	0
Vista Del Mar Hospital	1	0	0	0	0
West Hills Regional Medical Center	5	1	0	0	4

LOS ANGELES COUNTY - SOUTH					
Beverly Hospital	18	5	2	10	4
Centinel Freeman Reg MC, Centinela Campus	41	15	7	14	9
Centinel Freeman Reg MC, Marina Campus	3	2	1	1	6
Centinel Freeman Reg MC, Memorial Campus	24	8	5	7	5
Coast Plaza Doctors Hospital	2	1	0	0	
Downey Regional Medical Center	26	6	2	2	7
Kaiser Permanente Bellflower Med Ctr	7	1	1	2	1
Kaiser Permanente Harbor City Med Ctr	12	0	0	0	4
Kindred Hospital La Mirada	0	0	0	0	1
LA County Harbor-UCLA Medical Center	55	16	12	39	8
LA County King / Drew Medical Center	41	11	4	8	5
Lakewood Regional Hospital	16	4	3	7	9
Little Company of Mary - San Pedro Hospital	13	2	1	3	3
Little Company of Mary Hospital	41	9	5	12	14
Long Beach Community Medical Center	5	2	0	0	6
Long Beach Mem MC / Miller Children's Hospital	62	19	10	27	14
Los Angeles Community Hospital - Norwalk	1	0	0	0	0
Memorial Hospital of Gardena	12	5	2	5	6
Pacific Hospital Long Beach	1	0	0	0	0
Presbyterian Intercommunity Hospital	21	6	5	11	11
Rancho Los Amigos Medical Center	1	0	0	0	0
St. Francis Medical Center	82	31	19	59	12
St. Mary Medical Center	34	9	4	20	5
Torrance Memorial Medical Center	60	3	1	1	5
Whittier Hospital Medical Center	3	0	0	0	6

ORANGE COUNTY					
Anaheim General Hospital	1	0	0	0	1
Anaheim Memorial Medical Center	34	4	1	0	4
Chapman Medical Center	1	0	0	0	0
Childrens Hospital of Orange County	40	8	5	13	0
Coastal Communities Hospital	3	0	0	0	0
Fountain Valley Regional Hospital and Med Ctr	40	1	1	3	2
Garden Grove Hospital and Medical Center	6	2	1	3	0
Hoag Memorial Hospital Presbyterian	35	7	5	17	7
Huntington Beach Hospital	2	0	0	0	1
Irvine Regional Hospital and Medical Center	9	3	3	10	3
Kaiser Permanente Anaheim Med Ctr	54	10	5	19	5
Kindred Hospital Brea	1	0	0	0	0
Kindred Hospital Westminster	2	0	0	0	1
La Palma Intercommunity Hospital	5	0	0	0	1
Los Alamitos Medical Center	17	3	1	3	7
Mission Hospital Regional Medical Center	32	9	9	34	13
Orange Coast Memorial Medical Center	0	0	0	0	1
Orange County Coroner's Office	0	0	0	0	11
Placentia Linda Community Hospital	1	0	0	0	1
Saddleback Memorial Medical Center	17	4	3	11	6

January 1 to December 31, 2006

	Organ Refer	Elig Refer	Organ Donors	Organs Tx'd	Tissue Donors
San Clemente Hospital	2	1	1	4	4
South Coast Medical Center	2	0	0	0	2
Specialty Hospital of Southern California	1	0	0	0	0
St. Joseph Hospital	16	2	2	4	6
St. Jude Medical Center	21	3	2	4	3
UCI Medical Center	101	31	19	67	6
West Anaheim Medical Center	4	0	0	0	0
Western Medical Center - Anaheim	5	0	0	0	5
Western Medical Center - Santa Ana	91	35	20	75	10

RIVERSIDE & SAN BERNARDINO COUNTIES

Arrowhead Regional Medical Center	114	31	16	61	18
Barstow Community Hospital	4	0	0	0	1
Bear Valley Community Hospital	0	0	0	0	2
Chino Valley Medical Center	4	0	0	0	5
Colorado River Medical Center	0	0	0	0	1
Community Hospital of San Bernadino	16	1	1	1	3
Corona Regional Medical Center	18	2	1	3	10
Desert Regional Medical Center	70	18	9	29	13
Desert Valley Hospital	12	0	0	0	7
Eisenhower Memorial Hospital	13	3	2	6	10
Hemet Valley Medical Center	10	3	1	2	11
Hi-Desert Medical Center	0	0	0	0	7
Inland Valley Regional Medical Center	21	2	2	5	10
Jerry L. Pettis Memorial VA Medical Center	1	0	0	0	2
John F. Kennedy Memorial Hospital	6	1	0	0	5
Kaiser Permanente Fontana Medical Center	103	13	6	14	18
Kaiser Permanente Riverside Med Ctr	25	1	1	4	6
Loma Linda University Medical Center	162	43	24	82	21
Menifee Valley Medical Center	4	2	1	2	6

	Organ Refer	Elig Refer	Organ Donors	Organs Tx'd	Tissue Donors
Moreno Valley Community Hospital	1	0	0	0	2
Mountains Community Hospital	0	0	0	0	2
Parkview Community Hospital Med Ctr	17	0	0	0	6
Rancho Springs Medical Center	6	0	0	0	12
Redlands Community Hospital	11	0	0	0	5
Riverside Community Hospital	48	21	12	41	23
Riverside County Coroner's Office	0	0	0	0	14
Riverside County Regional Med Center	102	23	19	55	15
San Antonio Community Hospital	37	7	4	10	19
San Bernardino County Coroner's Office	0	0	0	0	10
San Gorgonio Memorial Hospital	1	0	0	0	3
St. Bernardine Medical Center	77	2	1	3	13
St. Mary Regional Medical Center	14	1	1	2	5
Twentynine Palms Naval Hospital	0	0	0	0	1
Victor Valley Community Hospital	21	1	0	0	0

SANTA BARBARA & VENTURA COUNTIES

Commy Memorial Hospital of San Buenaventura	15	1	1	3	2
Goleta Valley Cottage Hospital	0	0	0	0	1
Los Robles Regional Medical Center	13	3	3	14	9
Marian Medical Center	8	1	0	0	3
Ojai Valley Community Hospital	1	0	0	0	1
Santa Barbara Cottage Hospital	38	9	5	18	1
Santa Paula Memorial Hospital	1	0	0	0	0
Santa Ynez Valley Cottage Hospital	0	0	0	0	2
Simi Valley Hospital and Health Care Services	7	5	3	11	4
St. John's Pleasant Valley Hospital	4	1	1	4	2
St. John's Regional Medical Center	31	7	3	12	10
Ventura County Medical Center	18	2	2	2	3
TOTAL	3,599	759	432	1,339	857

American Red Cross and OneLegacy: Partners for Life

OneLegacy is proud to announce a new community partnership with the American Red Cross Blood Services Southern California Region.

Like OneLegacy, the American Red Cross has a critical, life-saving mission. Every day in Southern California, the American Red Cross must provide more than 1,100 units of blood to local hospitals for patients in need. Among these patients are those undergoing transplant procedures, which may require up to 50 units of blood.

The organizations also share a common audience: students. High school and college students account for a large percentage of blood donors, while high school students are presented with the opportunity to be des-

igned organ and tissue donors when applying for their first driver's license.

"We are proud to partner together to save lives and inspire Southern Californians



American Red Cross

to donate blood as well as sign up with the Donate Life California Registry," said Kathleen Hostert, Community Partnerships Coordinator for OneLegacy.

The partnership includes incorporating blood donation into OneLegacy's "Bridging Lives" high school education program as

well as displaying information about the Donate Life California Organ & Tissue Donor Registry in "canteen" rest areas at all American Red Cross blood drives throughout Southern California. The message to blood donors: life may not be possible for some transplant patients without the generosity of blood donors.

"One Legacy saves lives, just like the American Red Cross. Combined, our partnership will save even more lives, as blood donors register on donatelife.org and those affiliated with organ transplants give blood. This is a true win for Southern California patients," said Cliff Numark, Director of Donor Recruitment for the American Red

Please see **ARCSC**, Page 10

Management Team

Tom Mone
Chief Executive Officer

Renee Hawthorne
Chief Operating Officer

Bobby Patton
Chief Financial Officer

Esther-Marie Carmichael
Hospital Services Director

Alan Cochran
*Director of Tissue Services
and Quality Systems*

Anita Corliss
Director of Human Resources

Jeff Fleming
Director of Family Services

Bryan Stewart
Director of Communications

Jim Trisch
Clinical Director

Sherry Watson
Clinical Director

800-338-6112

**24-hour line for routine
notification or donor referrals**

www.onelegacy.org



221 South Figueroa Street, Suite 500
Los Angeles, CA 90012

Return Service Requested

NON-PROFIT
U.S. POSTAGE
PAID
LOS ANGELES CA
PERMIT #32574